

12.5 M
MIN FRONTAGE

21.0 SQ

ENFIELD



Plan

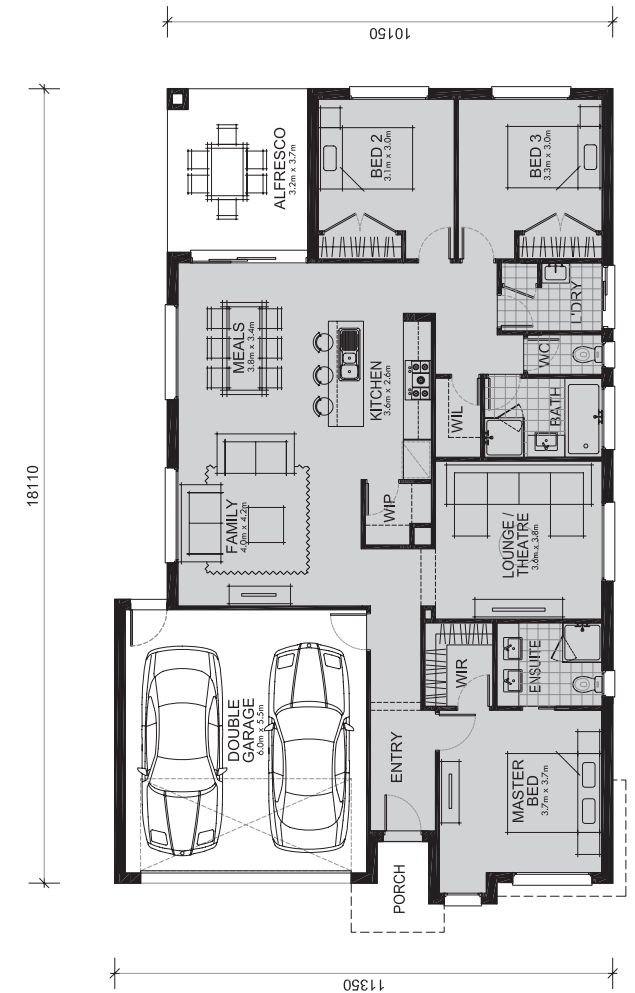
Available Facades

Ashton
Boyd
Elis
Leon
Nolan
Tuan

The Enfield is a family home with all the stylish design basics you'd expect, plus a few terrific extras you didn't!

The hub of the Enfield home is the central open plan living, dining and kitchen space that flows out to the alfresco dining area. Those who want to get away from the chatter can retreat to the separate lounge/theatre room. The master bedroom features a private reading alcove, walk-in wardrobe and double vanity en-suite. Bedrooms 2 and 3 have their own space at the other end of the house. You'll love the fabulous walk-in pantry and walk-in linen cupboard. The double garage is ideal for 2 car families.

Living Area:	143.3 sqm	15.4 sq
Garage Area:	36.5 sqm	3.9 sq
Porch Area:	3.2 sqm	0.3 sq
Alfresco Area:	11.9 sqm	1.3 sq
Total Area:	194.9 sqm	21.0 sq



T 1300 271 315

E sales@mimosahomes.com.au

www.mimosahomes.com.au