

12.5 M  
MIN FRONTAGE

24.0 SQ

JOHANNA 1



## Plan

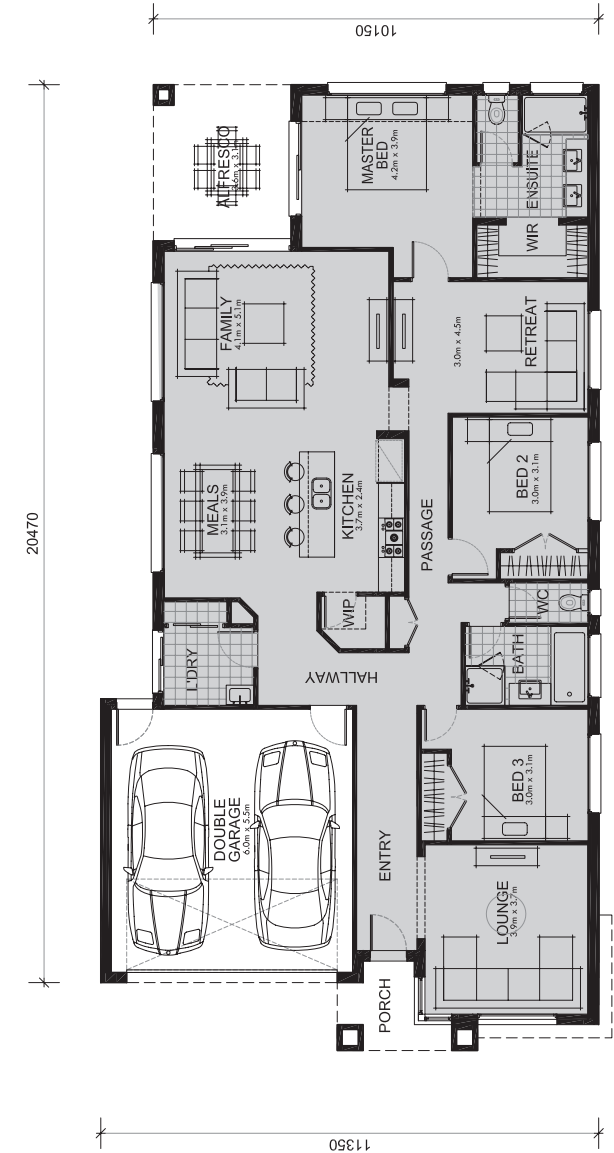
### Available Facades

Ashton  
Boyd  
Echo  
Elis  
Nolan  
Tuan

**Multiple living areas give everyone the freedom to relax in their own space.**

With 3 bedrooms and 3 living spaces, there's no such thing as a crowded house here! The expansive kitchen, dining and central family room leads out to a delightful alfresco area where you can enjoy those warm summer days and nights. The master bedroom boasts a double vanity en-suite with separate WC, a generous walk-in wardrobe, and doors to the patio. A quiet retreat area away from the hub of the house and a secluded lounge at the front of the home gives you two more havens to relax in. A walk-in pantry, built-in wardrobes, laundry room, storage spaces, separate WC and a double garage with internal access give the Johanna all the special features a family could want.

Living Area:	171.3 sqm	18.4 sq
Garage Area:	36.5 sqm	3.9 sq
Porch Area:	4.1 sqm	0.4 sq
Alfresco Area:	11.2 sqm	1.2 sq
<b>Total Area:</b>	<b>223.1 sqm</b>	<b>24.0 sq</b>



T 1300 271 315

E sales@mimosahomes.com.au

[www.mimosahomes.com.au](http://www.mimosahomes.com.au)