

# Belmont 188

18.8

SQ

12.5

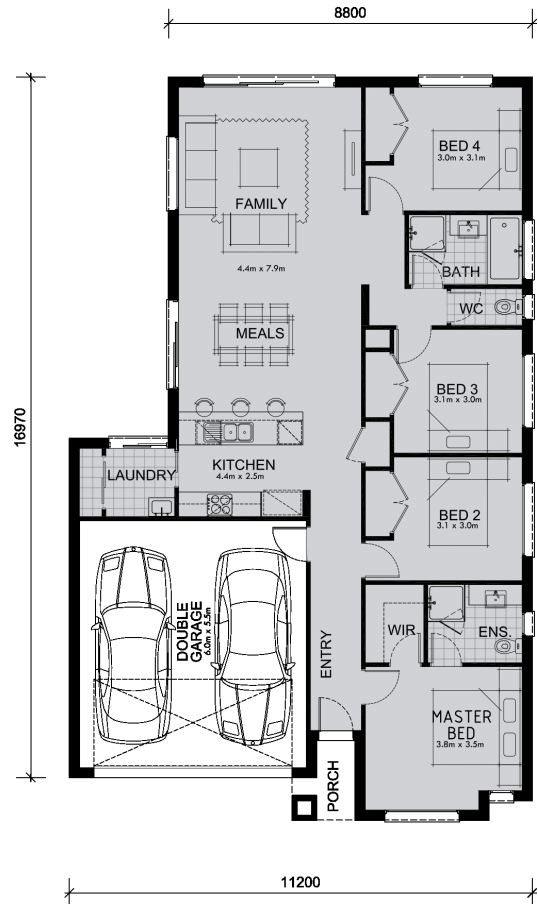
M Minimum Frontage

 4
  2
  2



A contemporary and stylish home, the Belmont is a beautiful place for you and your family to enjoy.

This functional modern home is practical and large enough for a growing family. With 4 bedrooms, 3 with built in robes and the master with a WIR and ensuite, an open plan kitchen which gushes into a generous dining and family room, perfect for entertaining your guests.



Living Area	135.6 sqm	14.6 sq
Garage Area	36.5 sqm	3.9 sq
Porch Area	2.4 sqm	0.3 sq
Alfresco Area	0.0 sqm	0.0 sq
<b>Total Area</b>	<b>174.5 sqm</b>	<b>18.8 sq</b>