

# Bromley 152

15.2

SQ

10.0

M Minimum Frontage



3



2

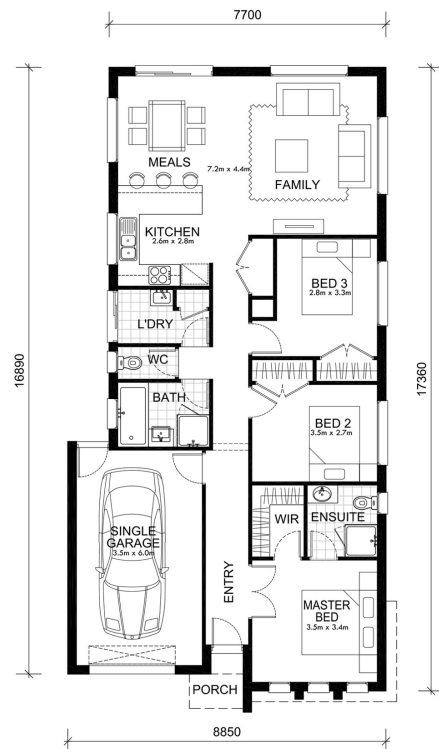


1



With three bedrooms and extra living space, this modern home is the perfect home for retirees, couples or small families.

The Bromley fits the bill perfectly with a master bedroom including walk-in wardrobe and en-suite, a 2nd and 3rd bedroom, and a kitchen/dining area that flows onto the family room. The front lounge provides a separate sanctuary from the bustle of the main living areas. The central bathroom with separate WC, laundry room, storage cupboard and single garage complete this lovely home.



|                   |                  |                |
|-------------------|------------------|----------------|
| Living Area       | 115.2 sqm        | 12.4 sq        |
| Garage Area       | 23.6 sqm         | 2.5 sq         |
| Porch Area        | 2.0 sqm          | 0.2 sq         |
| Alfresco Area     | 0.0 sqm          | 0.0 sq         |
| <b>Total Area</b> | <b>140.8 sqm</b> | <b>15.2 sq</b> |