

Brook 292

29.2

SQ

14.0

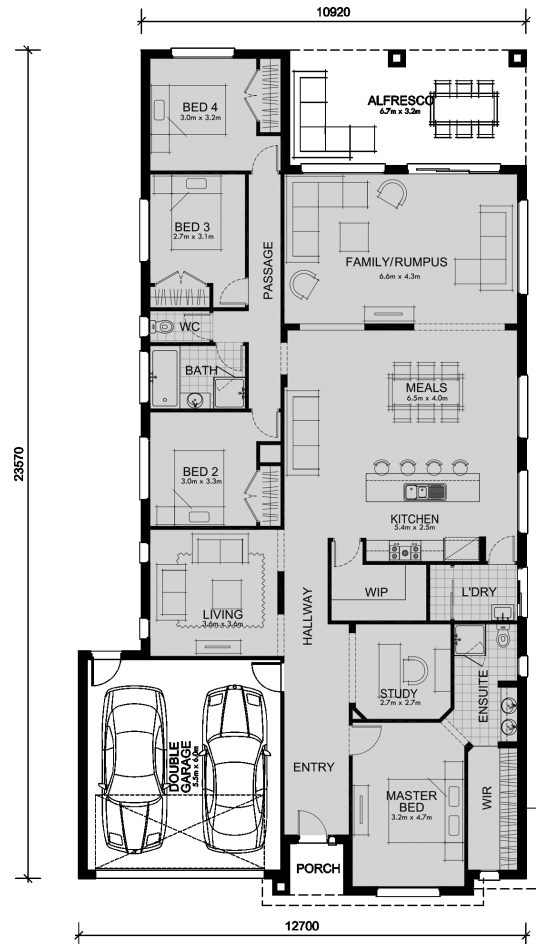
M Minimum Frontage

 4
  2
  2



Grand size, grand style - the elegant and spacious Brook is one of our largest homes.

Designed with families and entertainers in mind, the generous kitchen and dining area opens onto the large family and rumpus rooms giving plenty of space for fun with family and friends. The living space goes on with doors leading to a large outdoor relaxing and dining area. The impressive master bedroom has a double vanity en-suite and a long walk-in wardrobe. A study and yet another living room provide quiet spaces when you need to retire from the bustle of the home. The 3 bedrooms in the 'guest/kids' wing all have built-in wardrobes and are serviced by a full bathroom and separate WC. Other much-loved features are the large walk-in pantry in the kitchen and laundry room with linen closet.



Living Area	209.8 sqm	22.6 sq
Garage Area	36.5 sqm	3.9 sq
Porch Area	3.3 sqm	0.4 sq
Alfresco Area	22.0 sqm	2.4 sq
Total Area	271.6 sqm	29.2 sq