

Elis 253

25.3

SQ

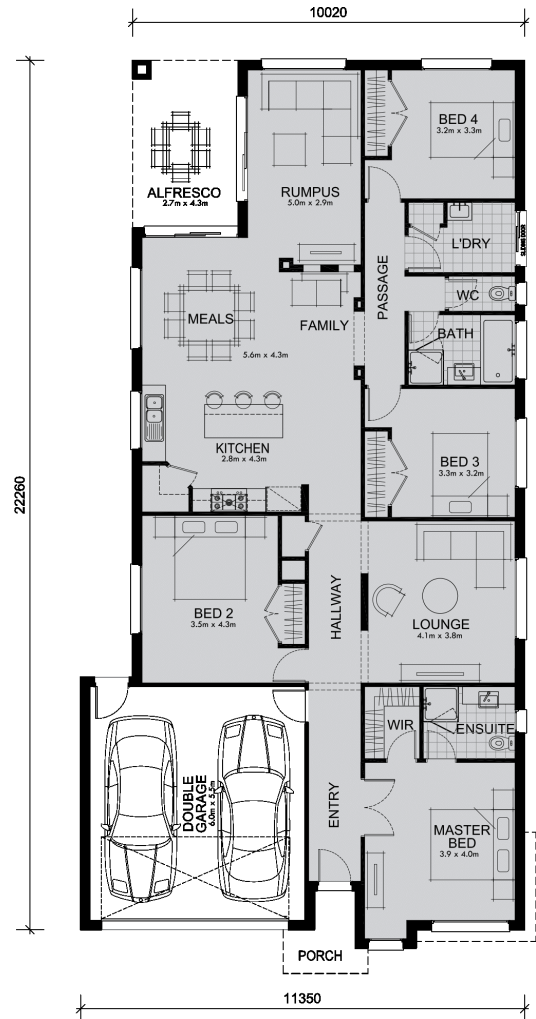
12.5

M Minimum Frontage



A stunning contemporary home with appealingly large proportions and smart use of space - the Elis has been designed with families in mind.

The ample kitchen/dining/family area has an adjoining rumpus room and alfresco dining area, creating a large shared space for all to enjoy. A separate "kids' wing" comprises 2 bedrooms, a bathroom and separate WC. The quieter end of this home has a large 3rd bedroom and a separate lounge room across the hall. The master bedroom features a walk-in wardrobe and en-suite bathroom. A laundry room and double garage complete your family's check list.



Living Area	183.1 sqm	19.7 sq
Garage Area	36.5 sqm	3.9 sq
Porch Area	3.3 sqm	0.4 sq
Alfresco Area	11.7 sqm	1.3 sq
Total Area	234.6 sqm	25.3 sq