

Elmore 191

19.1

SQ

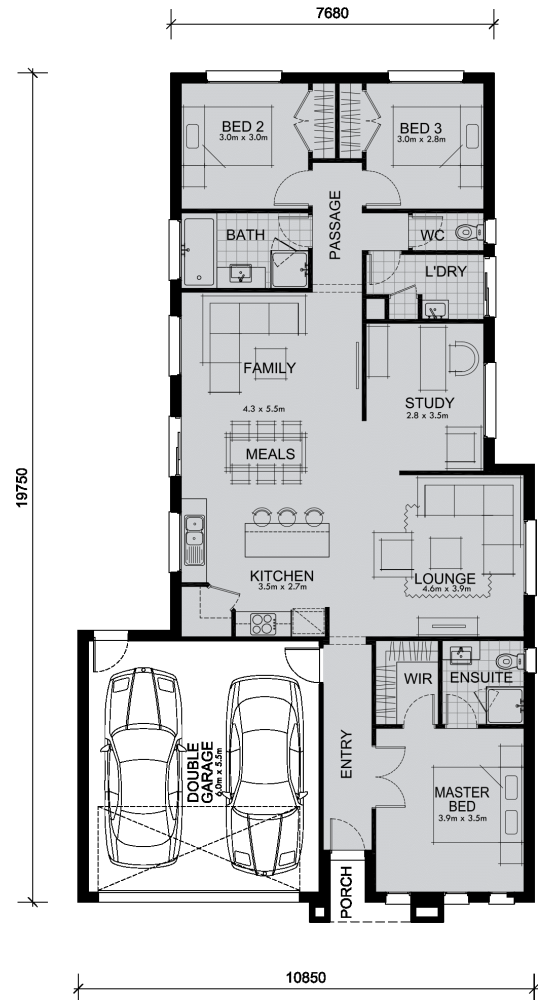
12.0

M Minimum Frontage



The Elmore combines modern, urban living with function and style.

An open plan kitchen, dining and family area adjoins the lounge and study room to create a wonderfully large and functional living area. Separate sleeping quarters for the kids are at the back of the house giving parents some peace and quiet. The master bedroom takes pride of place at the front of the Elmore and features a walk-in wardrobe and en-suite. The double garage, built-in wardrobes, separate WC and laundry room meet all the modern family's requirements.



Living Area	138.6 sqm	14.9 sq
Garage Area	36.5 sqm	3.9 sq
Porch Area	2.4 sqm	0.3 sq
Alfresco Area	0.0 sqm	0.0 sq
Total Area	177.5 sqm	19.1 sq