

Johanna 240 Bedroom

24.0

SQ

12.5

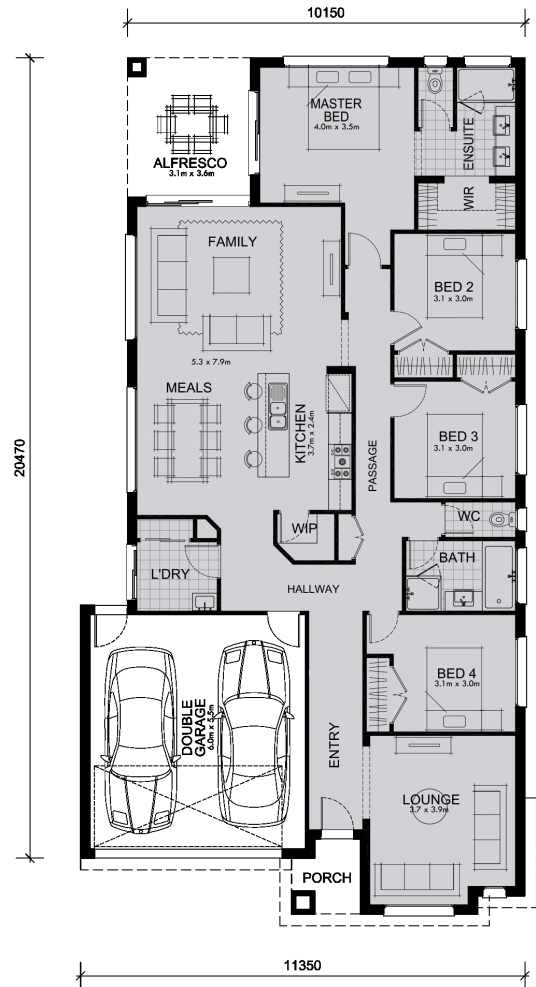
M Minimum Frontage

 4
  2
  2



Four bedrooms gives everyone the freedom to relax in the Johanna.

The expansive kitchen, dining and central family room leads out to a delightful alfresco area so you can enjoy those warm summer days and nights. The master bedroom boasts a double vanity en-suite with separate WC, a generous walk-in wardrobe and doors to the patio. The lounge room at the other end of the home gives you a quiet retreat away from the family bustle. A walk-in pantry, built-in wardrobes, laundry room, storage spaces, separate WC and a double garage with internal access give the Johanna all the special features a family could want.



Living Area	171.6 sqm	18.5 sq
Garage Area	36.5 sqm	3.9 sq
Porch Area	4.1 sqm	0.4 sq
Alfresco Area	11.2 sqm	1.2 sq
Total Area	223.4 sqm	24.0 sq