

Johanna 240 Retreat

24.0

SQ

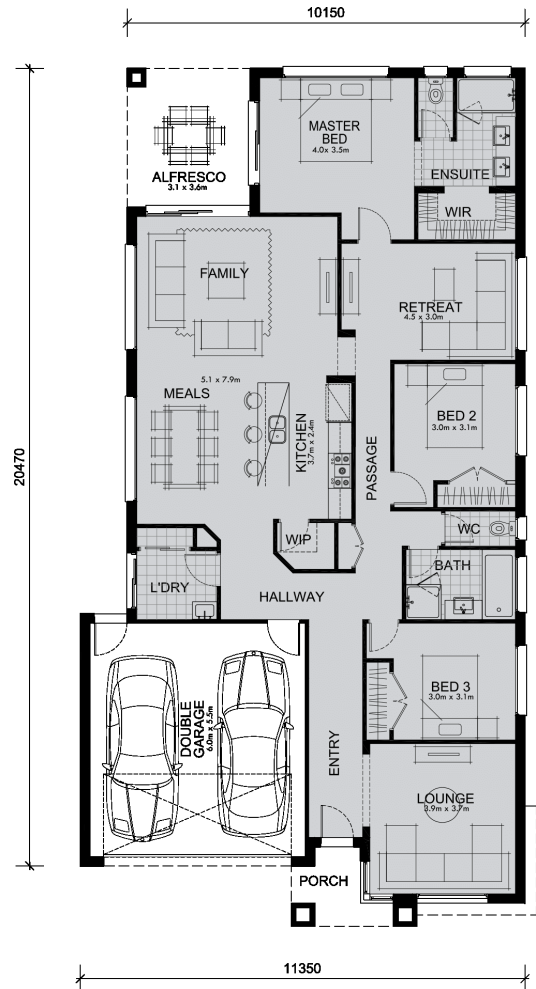
12.5

M Minimum Frontage



Multiple living areas gives everyone the freedom to relax in their own space.

With 3 bedrooms and 3 living spaces, there's no such thing as a crowded house here! The expansive kitchen, dining and central family room leads out to a delightful alfresco area where you can enjoy those warm summer days and nights. The master bedroom boasts a double vanity en-suite with separate WC, a generous walk-in wardrobe and doors to the patio. A quiet retreat area away from the hub of the house and a secluded lounge at the front of the home gives you two more havens to relax in. A walk-in pantry, built-in wardrobes, laundry room, storage spaces, separate WC and a double garage with internal access give the Johanna all the special features a family could want.



Living Area	171.3 sqm	18.4 sq
Garage Area	36.5 sqm	3.9 sq
Porch Area	4.1 sqm	0.4 sq
Alfresco Area	11.2 sqm	1.2 sq
Total Area	223.1 sqm	24.0 sq