

Mandurah 287

28.7

SQ

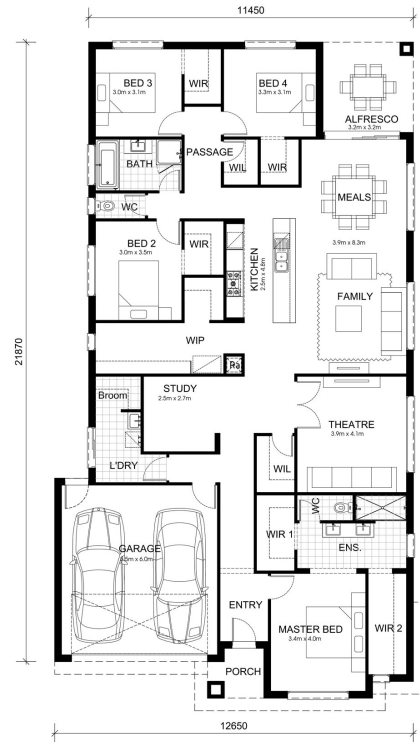
14.0

M Minimum Frontage



Grand size, grand style - the elegant and spacious Mandurah is one of our largest homes.

With luxury and family living at the heart of this floorplan, the Mandurah 287 provides you with a range of amenities that will have your family living in class and elegance. Featuring a large master bedroom with a double vanity, two large walk-in wardrobes, two walk-in linen, study, a large walk-in pantry and walk-in wardrobes for every bedroom.



Living Area	266.7 sqm	28.7 sq
Garage Area	36.5 sqm	3.9 sq
Porch Area	3.2 sqm	0.3 sq
Alfresco Area	10.2 sqm	1.1 sq
Total Area	266.7 sqm	28.7 sq