

# Mandurah 342

34.2

SQ

16.0

M Minimum Frontage



4



2

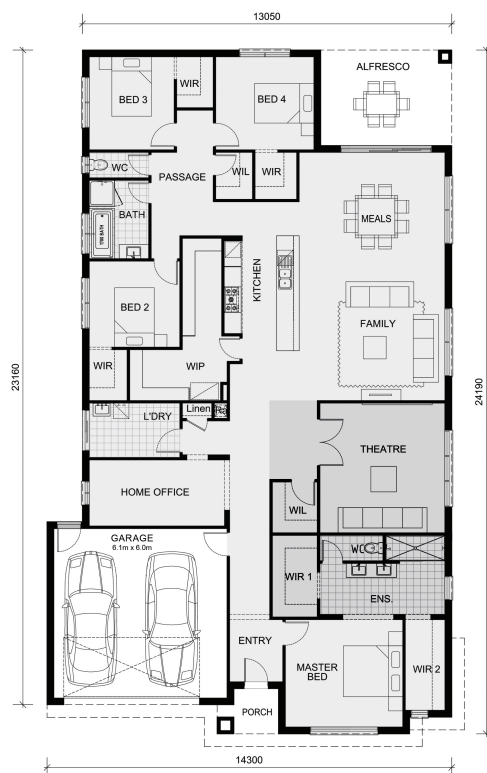


2



This grand open plan contemporary home has been designed for those who like to entertain.

The large open plan kitchen, grand butlers pantry, meals and living area which adjoins to the alfresco creates a comfortable shared space great for entertaining. Comprising of 4 bedrooms all with walk in robes, a private master with a generous en-suite together with his and hers walk in robes, home theatre, and walk-in linen makes this the perfect home for everyday family living.



Living Area	259.3 sqm	29.7 sq
Garage Area	40.0 sqm	4.3 sq
Porch Area	3.1 sqm	0.3 sq
Alfresco Area	15.6 sqm	1.7 sq
<b>Total Area</b>	<b>318.0 sqm</b>	<b>34.2 sq</b>