

Mansfield 256

25.6

SQ

12.5

M Minimum
Frontage



3



2

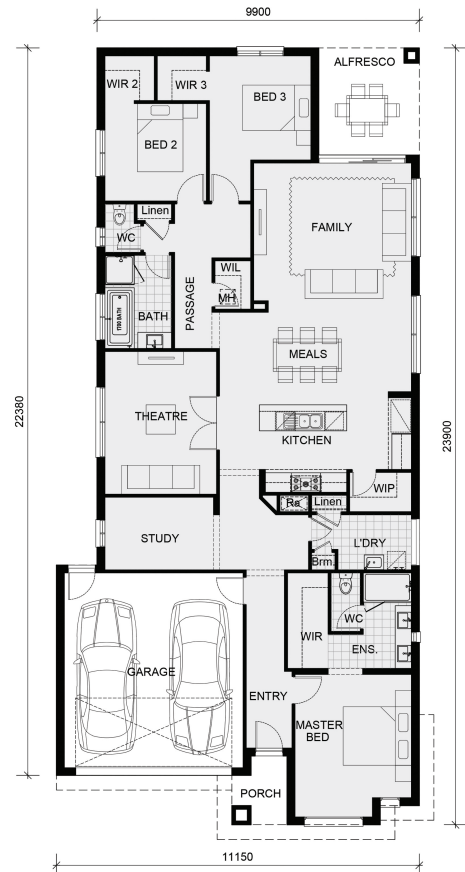


2



A clever design that accommodates the whole family

The distinctive feature of the Mansfield is its large open kitchen, family & meals area that open onto the alfresco at the rear of the home, great for entertaining. Complete with a theatre & generous sized study area, the Mansfield also features a luxurious master suite privately located at the front of the home, while 2 additional bedrooms with walk in robes are cleverly zoned to the rear of the home. If you're looking for a functional & stylish home that allows you to spend more time entertaining, the Mansfield is the home for you.



| | | |
|-------------------|------------------|----------------|
| Living Area | 187.7 sqm | 20.2 sq |
| Garage Area | 36.5 sqm | 3.9 sq |
| Porch Area | 3.3 sqm | 0.4 sq |
| Alfresco Area | 10.2 sqm | 1.1 sq |
| Total Area | 237.7 sqm | 25.6 sq |