

Mernda 218

21.8

SQ

12.5

M Minimum Frontage



4



2

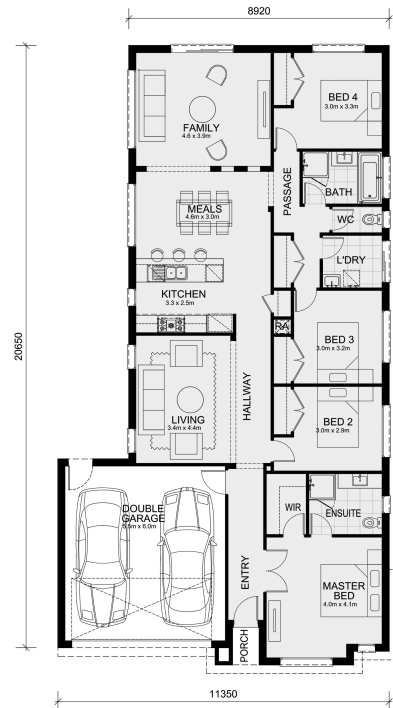


2



Utility, style and space all blend beautifully in this design. You'll love to call the Mernda home.

With 4 bedrooms and clearly defined living and family areas there's room for everyone to find their own happy place. The kitchen and dining area in the heart of the home has a family room and living room on either side - creating a communal area of generous proportions. The master bedroom has the essential walk-in wardrobe and en-suite, and 3 more bedrooms accommodate the rest of the family with ease. A separate WC, built-in wardrobes, laundry room and double garage complete a modern family's requirements.



Living Area	164.1	sqm	17.7	sq
Garage Area	36.5	sqm	3.9	sq
Porch Area	2.3	sqm	0.2	sq
Alfresco Area	0.0	sqm	0.0	sq
Total Area	202.9	sqm	21.8	sq