

Romsey 210

21.0

SQ

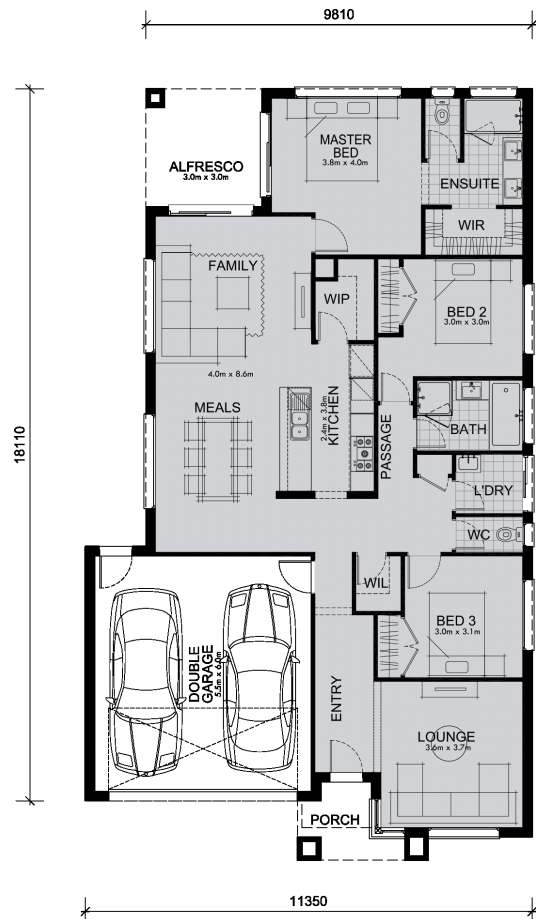
12.5

M Minimum Frontage



Spacious open-plan living and 3 bedrooms are surrounded by modern luxury in the Romsey 210.

Pass through the modern entranceway of the Romsey to be greeted with a stylish, open-plan design. A formal lounge at the front of the home leads to the bedroom and bathroom wing. The light-filled living and dining area adjoins the designer kitchen and alfresco dining zone. A luxurious master bedroom with ensuite is situated at the private rear of the home.



Living Area	145.3 sqm	15.6 sq
Garage Area	36.5 sqm	3.9 sq
Porch Area	4.2 sqm	0.5 sq
Alfresco Area	8.9 sqm	1.0 sq
Total Area	194.9 sqm	21.0 sq