

Romsey 240

24.0 SQ

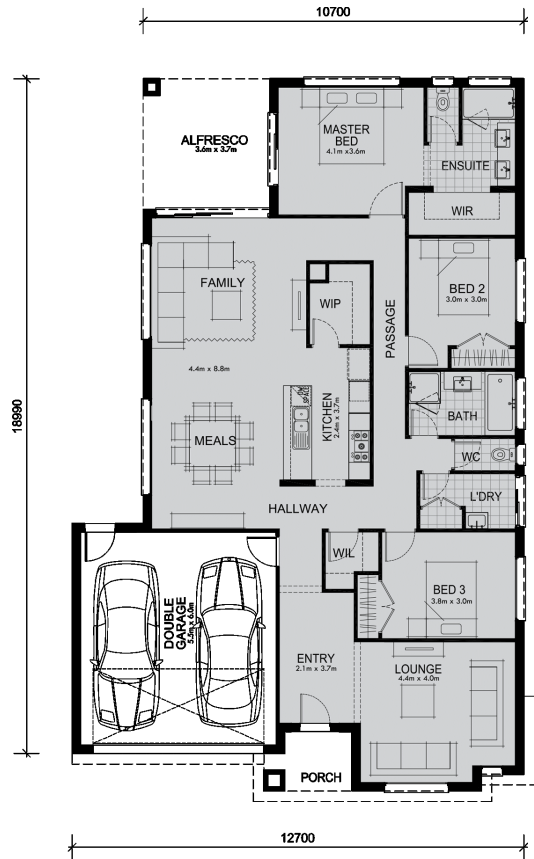
14.0 M Minimum Frontage

 3
  2
  2



Multiple living areas and three bedrooms gives everyone the freedom to relax in this smartly designed home!

The design feature of the Romsey home is the central open plan living, dining and kitchen space that flows out to the alfresco dining area. Complete with a luxurious master bedroom at the rear of the home and a great formal lounge room at the front.



Living Area	169.9 sqm	18.3 sq
Garage Area	36.5 sqm	3.9 sq
Porch Area	3.8 sqm	0.4 sq
Alfresco Area	13.1 sqm	1.4 sq
Total Area	223.3 sqm	24.0 sq



1300 MIMOSA
 sales@mimosahomes.com.au
 mimosahomes.com.au