

Saba 260

26.0

SQ

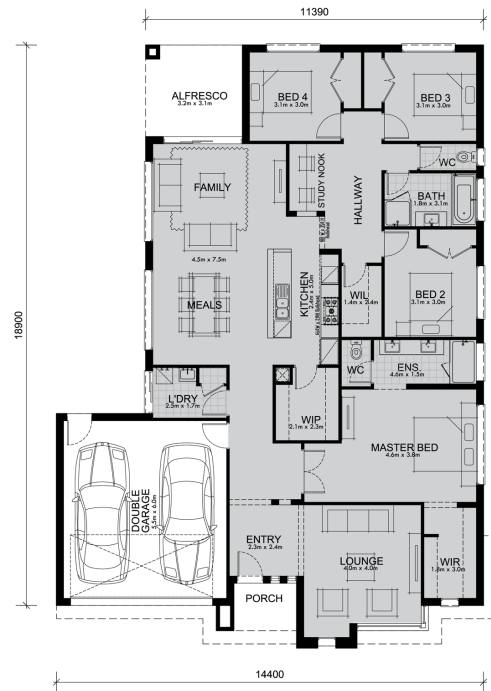
16.0

M Minimum Frontage



Luxurious on design and space, this is a generous home the whole family will love, enjoy and feel proud of.

The designers have met everyone's wish-list with the 4 bedroom Saba. The well considered floor plan offers large living spaces with central family, dining, rumpus and study areas with a kitchen with walk-in pantry. A large alfresco dining area is designed for warm evenings, BBQs and entertaining while the separate lounge at the other end of the house provides a quiet sanctuary. With a master bedroom boasting a generous en-suite and ample walk-in wardrobe, the Saba is a luxurious home with all the features a family could want. You can tick beautiful entrance foyer, plenty of storage space, and a separate laundry off your list too.



Living Area	191.4 sqm	20.6 sq
Garage Area	36.5 sqm	3.9 sq
Porch Area	3.9 sqm	0.4 sq
Alfresco Area	10.1 sqm	1.1 sq
Total Area	241.9 sqm	26.0 sq