

Saba 287

28.7

SQ

14.0

M Minimum Frontage



4



2

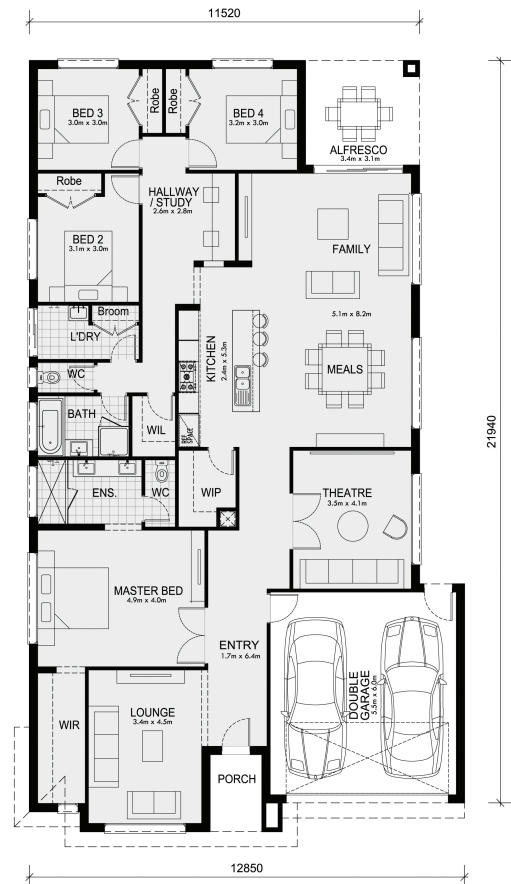


2



Incorporating all the elements of modern living, this well thought out design has functional living areas and room to grow.

The Saba 287 boasts plenty of options for entertainment and for relaxation. This well considered floor plan offers a generous master bedroom with a private en-suite and large walk-in robe. The kitchen overlooks the meals zone at the center of the home which spills into an adjoining family room. A private study hub connects to three good sized bedrooms located at the rear of the home. Complete with a lounge, theatre, alfresco walk-in pantry, walk-in linen, built-in wardrobes, laundry room, separate WC and a double garage with internal access give the Saba 287 all the special features and endless possibilities a family could want.



Living Area	215.9 sqm	23.2 sq
Garage Area	36.5 sqm	3.9 sq
Porch Area	4.0 sqm	0.4 sq
Alfresco Area	10.4 sqm	1.1 sq
Total Area	266.8 sqm	28.7 sq