

# Saba 331

33.1

SQ

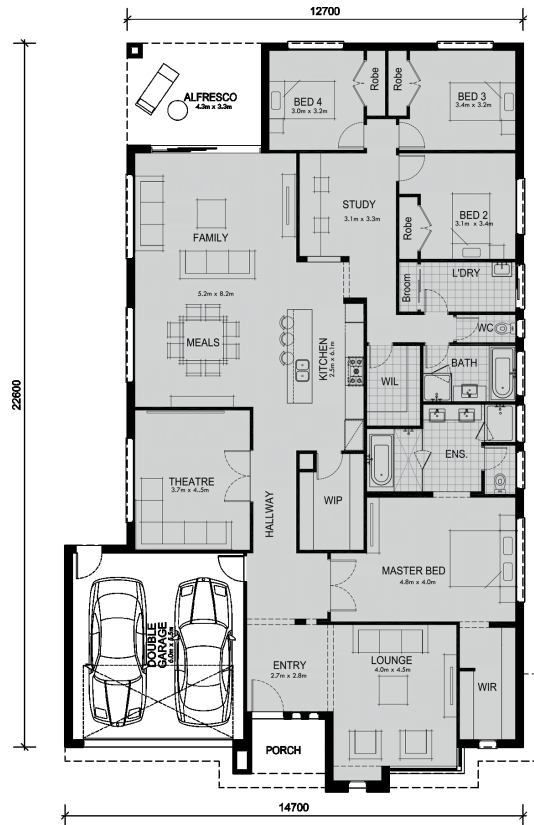
16.0

M Minimum Frontage



Luxurious on design and space, this is a generous home the whole family will love, enjoy and feel proud of.

The designers have met everyone's wish-list with the 4 bedroom Saba. The well considered floor plan offers large living spaces with central family, dining, rumpus and study areas with a kitchen with walk-in pantry. A large alfresco dining area is designed for warm evenings, BBQs and entertaining while the separate lounge at the other end of the house provides a quiet sanctuary. With a master bedroom boasting a generous en-suite and ample walk-in wardrobe, the Saba is a luxurious home with all the features a family could want. You can tick beautiful entrance foyer, plenty of storage space, and a separate laundry off your list too.



Living Area	252	sqm	27.1	sq
Garage Area	36.5	sqm	3.9	sq
Porch Area	4.7	sqm	0.5	sq
Alfresco Area	14.2	sqm	1.5	sq
<b>Total Area</b>	<b>307.4</b>	<b>sqm</b>	<b>33.1</b>	<b>sq</b>