

# Seymour 170

17.0

SQ

M Minimum  
Frontage



3



2

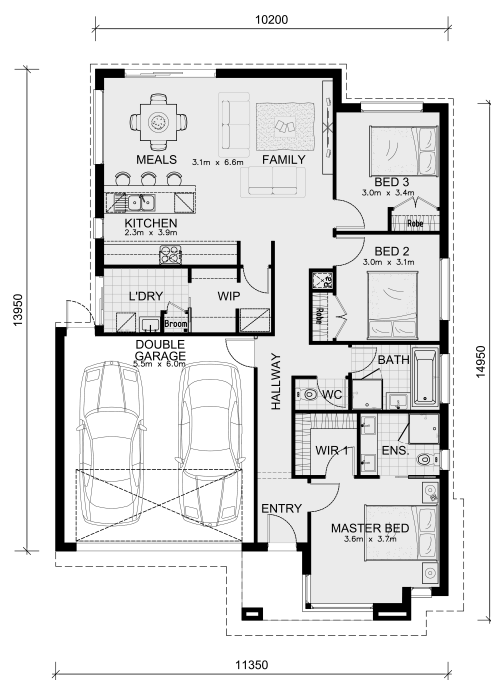


2



A stunning contemporary home that incorporates all aspects of modern living on smaller blocks.

Ideal for small blocks of land, the Seymour 170 features a large master bedroom with a walk-in wardrobe and double vanity ensuite, 2 spacious bedrooms, laundry, double car garage, walk-in pantry and a large open living Meals/Kitchen/Family area making the Seymour 170 perfect for couples, investors or small families.



Living Area	117.3 sqm	12.6 sq
Garage Area	36.5 sqm	3.9 sq
Porch Area	4.0 sqm	0.4 sq
Alfresco Area	sqm	sq
<b>Total Area</b>	<b>157.8 sqm</b>	<b>17.0 sq</b>