

Winton 190

19.0

SQ

10.0

M Minimum Frontage



3



2



1



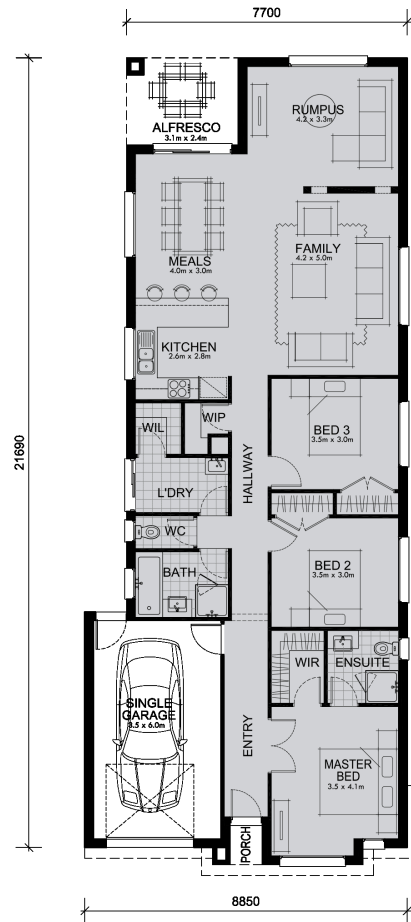
Big, adaptable living spaces give modern families the lifestyle they're looking for.

Combined living, entertaining and relaxing areas make spending time with family and friends so easy. The alfresco dining and rumpus room gives you space to spread out and relax. The master bedroom has the essential walk-in wardrobe and en-suite. Two more bedrooms, a walk-in kitchen pantry, walk-in linen cupboard, laundry room, bathroom with separate WC and internal access to the single garage are more great features of this simple, practical design.

Facade Options

Living Area	sqm	sq
Garage Area	sqm	sq
Porch Area	sqm	sq
Alfresco Area	sqm	sq
Total Area	sqm	sq

*All plans and facades are indicative concepts and are not intended to be an actual depiction of the building. All dimensions are approximate and are not necessarily to scale.



144.2	15.5
23.6	2.5
1.2	0.1
7.4	0.8
176.4	19.0