



4 2 2

1014,84 Generation C Windermere Estate MAMBOURIN VIC 3024

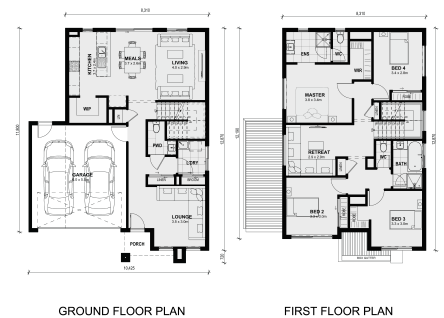
Land Size: 392 m² House Size: 222 m²

Dedicated to rest and relaxation the Epsom features four bedrooms all located on the first floor and is accompanied by a retreat and shared bathroom. On the ground floor, the highlight is the large open kitchen, meals and dining area that also has a large walk-in wardrobe, powder room, walk-in linen and a separate front lounge as the perfect sanctuary.

- Concrete Driveway included
- Stone Benchtops to Kitchen included
- 2590mm Ceiling Height to Ground Floor included
- Landscaping included
- Letter box included
- Folddown clothesline included

Contact Builder Direct

All plans and facades are indicative only and may change. Mimosa Homes may amend plans, specifications, and prices without notice. Package prices are based on a standard facade, standard inclusions, and suitable land availability, excluding developer/estate requirements. Facade and inclusion images may show non-standard items not included in the price. Dimensions are approximate. Landscaping, fencing, decking, planter boxes, drive...



GROUND FLOOR PLAN

FIRST FLOOR PLAN

\$757,391

Max Gutierrez

E: max@mimosahomes.com.au

P: 0422926349