



 4
  2
  2

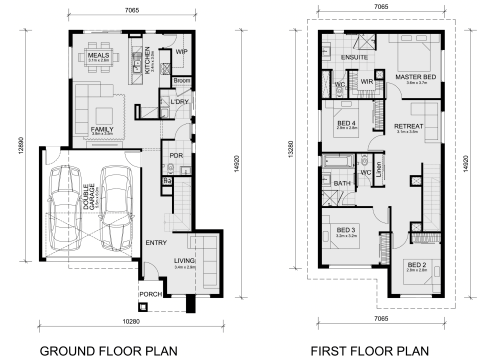
## 1034 Rigby Drive Beveridge 3753 VIC

**Land Size: 263 m<sup>2</sup> House Size: 215.5 m<sup>2</sup>**

\* Mimosa Homes New Added Value Inclusions:

- Inclusive of site costs & connections with H1 class slab as per standard inclusions!
- 50 Year Structural Warranty!
- Landscaping Included!
- Driveway Included!
- Blinds Throughout!
- Quality floor coverings throughout entire home!
- Double Glazed Awning windows!
- 600mm S/S upright oven and cook top with S/S canopy rangehood!
- Stainless steel Dishwasher
- 7-star energy!
- Pre Priced upgrades and more!

CALL FRANK 0432905897!...



# \$651,025

**Frank Mushtaq**  
E: frank@mimosahomes.com.au