



4 2 2

105 Starling Road - Starling Estate OFFICER VIC 3809

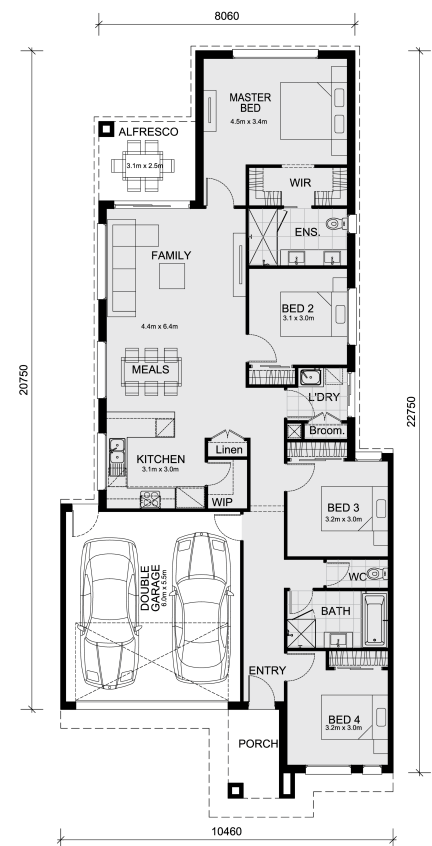
Land Size: 294 m² House Size: 189 m²

This Glenmore 207 home and land package is located in Starling Estate, Officer.

Land inclusions made affordable!

Check it out:

- Mimosa Homes' 50-Year Structural Warranty!
- Fixed site costs are included - only \$3,500! (limited-time offer)
- Laminated, carpeted, and tiled floor coverings throughout
- Color-through concrete driveway and path to door
- Letterbox
- Clothesline
- Blinds for windows
- Recessed tile shower bases throughout
- Towel and toilet roll holders
- Continuous flow hot water units
- 2 remote controls for the garage & 1 wall-mounted control in the garage
- Internal access door from the garage to the inside
- Modern oven, cooktop, and rangehood
- Fiber optic provision with 2 phone/data points
- 7-Star energy rating for the home with heating
- Concrete floor in an alfresco area, where applicable
- Part A Termite Management System for all pipe penetrations through the slab
- Part B Termite Management System for the external pe...



\$699,700

Adam Keleher

E: adamk@mimosahomes.com.au

P: 0439779909