



## 1052 Tangara Road Beveridge 3753 VIC

**Land Size: 392 m<sup>2</sup> House Size: 208 m<sup>2</sup>**

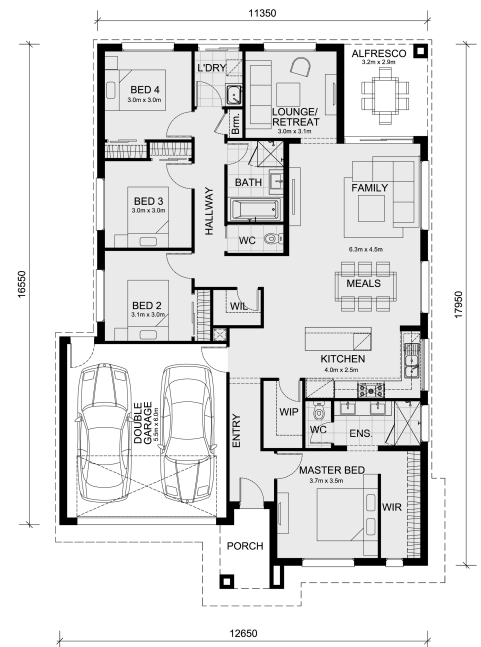
The Aspendale 226 House and Land Package!

\* Mimosa Homes New Added Value Inclusions:

- 50 Year Structural Warranty!
- Inclusive of site costs & connections with H1 class slab as per standard inclusions!
- Quality floor coverings throughout entire home!
- Higher ceilings 2550mm to ground floor!
- Double Glazed Awning windows!
- LED Downlights to entire home!
- Fibre Optic Provision!
- Vitrified Compact Surface benchtop to kitchen, bathroom & ensuite!
- 900mm S/S upright oven and cook top with S/S canopy rangehood!
- Stainless steel Dishwasher and Microwave with trim kit!
- 7 star energy rated!
- Flexible floor plans & so much more!

CALL BUILDER DIRECT- NAP MADRIAGA 0427631471

All plans and facades are indicative only and may change. Mimosa Homes may amend plans, specifications, and prices without notice. Package prices are based on a standard facade, standard inclusions, and suitable land availability, excluding developer/estate requirements. Facade and inclusion images may show n...



# \$662,130

**Nap Madriaga**

E: [nap@mimosahomes.com.au](mailto:nap@mimosahomes.com.au)