



Saba 331

4 beds 2 bathrooms 2 cars

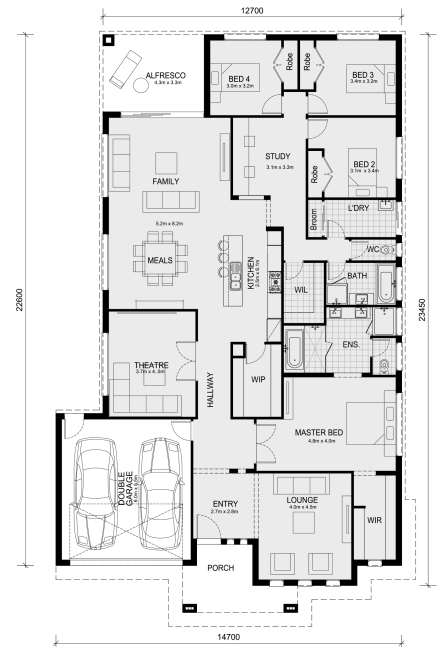
17 Poppy Street, Botanical Estate MICKLEHAM VIC 3064

Land Size: 512 m² House Size: 307 m²

The Saba 331 at Botanical Estate!

Premium display home features include:

- Higher ceilings 2550mm!
- Downlights to living areas!
- Stone bench top to kitchen!
- 900mm S/S upright oven and cook top with S/S canopy rangehood!
- Stainless steel Dishwasher and Microwave with trim kit!
- Overhead cupboards & wine rack!
- Remote control panel sectional lift garage door!
- Zoned alarm system
- And much more!...



\$965,000 -

Matthew Grant

E: matthew@mimosahomes.com.au

P: 0419119911