



# Elwood 14m (Malvern 443)

# \$1,000,990

2062 Fountain Street Lara 3212 VIC



## Mimosa Homes Proudly Presents the Elwood 14m (Malvern 443)

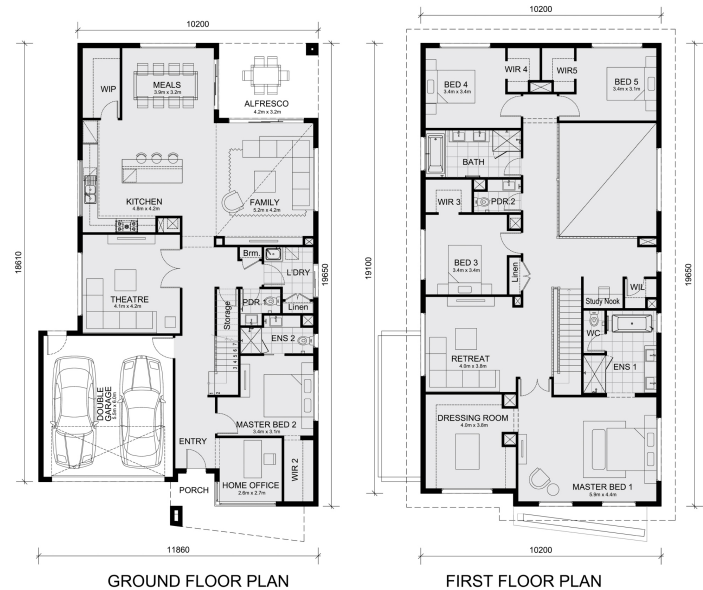
The Malvern 443 House and Land Package!

\* Mimosa Homes New Added Value Inclusions:

- Inclusive of site costs & connections with H1 class slab as per standard inclusions!
- 50 Year Structural Warranty!
- Colorbond Steel Roof to double storey homes only!
- Quality floor coverings throughout entire home!
- Higher ceilings 2550mm to ground floor!
- Double Glazed Awning windows!
- LED Downlights to entire home!
- Vitrified Compact Surface benchtop to kitchen, bathroom & ensuite!
- 900mm S/S upright oven and cook top with S/S canopy rangehood!
- Stainless steel Dishwasher and Microwave
- 4 star ducted gas heating unit!
- 7 star energy!
- Flexible floor plans & so much more!

CALL BUILDER DIRECT!

All plans and facades are indicative only and may change. Mimosa Homes may amend plans, specifications, and prices without notice. Package prices are based on a standard facade, standard inclusions, and suitable land availability, excluding developer/estate requirements. Facade and inclusion images may show non standard items not included in the price. Dimensions are approximate. Landscaping, fencing, decking, planter boxes, driveways, and paths...



### Area Details

Land Size: 512 sqm  
Building Size: 411.8 sqm

Contact: Frank Mushtaq  
Phone:  
frank@mimosahomes.com.au

www.mimosahomes.com.au