



4 2 2

219 Bottlebrush place Lara 3212 VIC

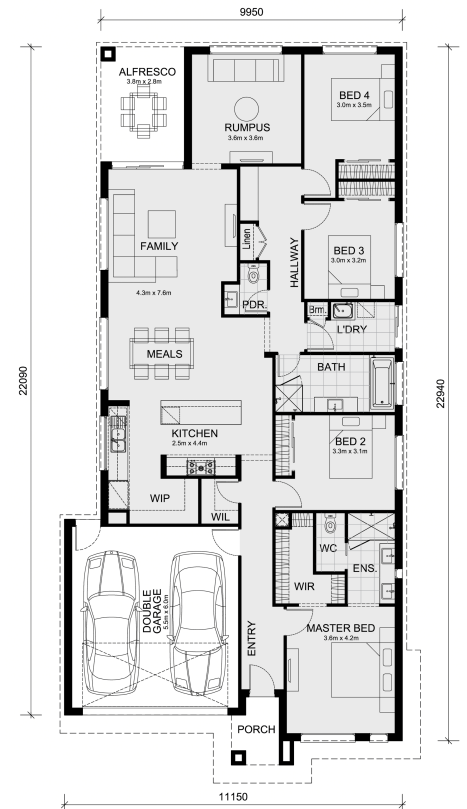
Land Size: 544 m² House Size: 234 m²

The Riverdale 254 House and Land Package!

* Mimosa Homes New Added Value Inclusions:

- 50 Year Structural Warranty!
- Inclusive of site costs & connections with H1 class slab as per standard inclusions!
- Quality floor coverings throughout entire home!
- Higher ceilings 2550mm to ground floor!
- Double Glazed Awning windows!
- LED Downlights to entire home!
- Fibre Optic Provision!
- Vitrified Compact Surface benchtop to kitchen, bathroom & ensuite!
- 900mm S/S upright oven and cook top with S/S canopy rangehood!
- Stainless steel Dishwasher and Microwave with trim kit!
- 7 star energy!
- Flexible floor plans & so much more!

CALL MAAN DIRECTLY ON 0433 061889!...



\$749,859

Maan Chaudhary

E: maan@mimosahomes.com.au

P: 0433 061 889