



4 2 2

221 Voyager Parade CLYDE NORTH VIC 3978

Land Size: 350 m² House Size: 207 m²

The Leemore 221 House and Land Package!

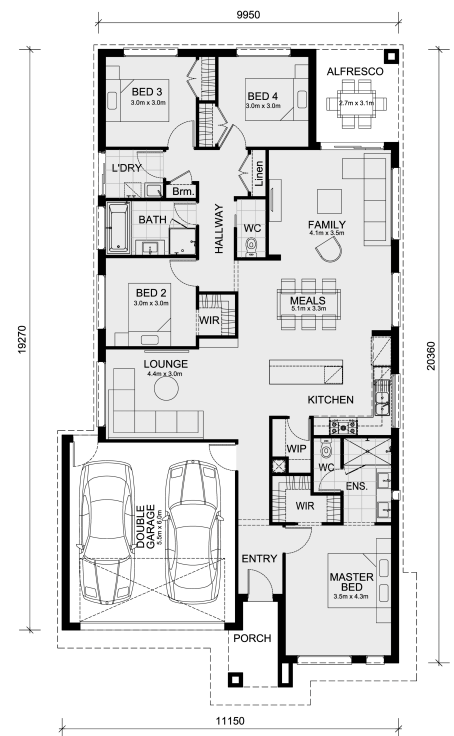
* NCC Compliant Floorplan

* Mimosa Homes Added Value Inclusions:

- Inclusive of site costs & connections with H1 class slab as per standard inclusions!
- Quality floor coverings throughout entire home!
- Higher ceilings 2550mm to ground floor!
- Double Glazed Awning windows
- Downlights to living areas!
- Vitrified Compact Surface benchtop to kitchen!
- 900mm S/S upright oven and cook top with S/S canopy rangehood!
- Stainless steel Dishwasher and Microwave with trim kit!
- Overhead cupboards & wine rack! (Design specific)
- Remote control panel sectional lift garage door!
- 7 star energy with solar hot water!
- Flexible floor plans & so much more!

CALL BUILDER DIRECT!

All plans and facades are indicative concepts only and are not intended to be accurate depictions. Mimosa Homes reserves the right to amend plans specifications and price without notice. Package prices are based on a standard facade, standard inclusions, the avai...



BRAND NEW DESIGN

\$699,000

Chamrin Bou

E: chamrin@mimosahomes.com.au

P: 0469767687