



## 253 Fernlea Homestead Boulevard Clyde 3978 VIC

**Land Size: 319 m<sup>2</sup> House Size: 183.4 m<sup>2</sup>**

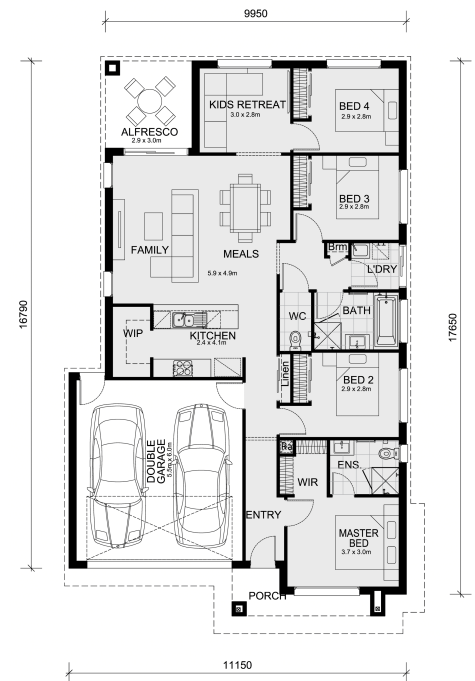
Mimosa Homes House and Land Package Includes:

- Inclusive of site costs & connections with H1 class slab as per standard inclusions!
- 50 Year Structural Warranty!
- Quality floor coverings throughout entire home!
- Double Glazed Awning windows!
- 600mm S/S Electric oven, Induction cook top with S/S canopy rangehood!
- Pre Priced upgrades and more!

All Electric home, inc Electric Heat Pump Hot Water Services, Electric split system Heating & Cooling.

CALL Adrian Keleher 0448654032 DIRECT!

Images, facades and floorplans are for illustrative purposes only and may differ from the final product. Mimosa Homes may amend plans, specifications, inclusions and pricing without notice. All V Collection House & Land Packages are subject to a final siting and compliance assessment under the Small Lot Housing Code and relevant design guidelines. Buyers must not purchase land based on this package or information until a Mimosa Homes siting assessment confirms suitability. Additional factors such as a...



# \$664,500

**Adrian Keleher**

E: [adriank@mimosahomes.com.au](mailto:adriank@mimosahomes.com.au)