



4 2 2

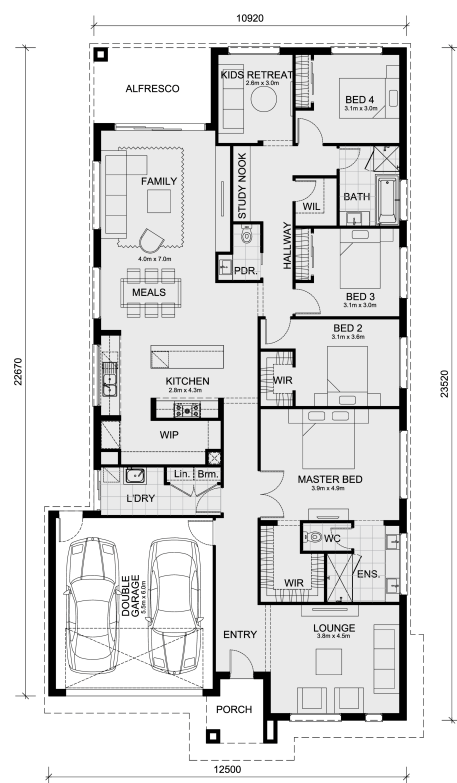
2739 Lilly Pilly Parkway - Riverfield Estate CLYDE NORTH VIC 3978

Land Size: 448 m² House Size: 265 m²

Introducing the Lexton 287 home and land package located in Riverfield Estate, Clyde North.

Experience exceptional value at no extra cost! Here's what's included:

- 50-Year Structural Warranty from Mimosa Homes
- Fixed site costs included
- Quality laminated, carpeted, and tiled floor coverings throughout
- Generous 2,550mm high ceilings
- Stylish 20mm vitrified compact surface (stone) kitchen benchtops
- Modern 900mm oven, cooktop, and rangehood (600mm for homes under 20 squares)
- Cupboards beside the rangehood and above the fridge
- Microwave with trim kit
- Dishwasher
- Elegant 20mm vitrified compact surface (stone) benchtops in the ensuite and bathroom
- Spacious double vanity in the ensuite
- Large shower in the ensuite
- Semi-floating vanities throughout (ensuite, bathroom, and powder room)
- Recessed tile shower bases with a tiled insert grate for waste
- 2,000mm high shower screens in the bathroom and ensuite (instead of 1,850mm)
- Space-saving quick-slide robe doors in bedr...



\$809,400

Adam Keleher

E: adamk@mimosahomes.com.au

P: 0439779909