



4 2 2

28 Kenmore Way - Saffron Estate CLYDE NORTH VIC 3978

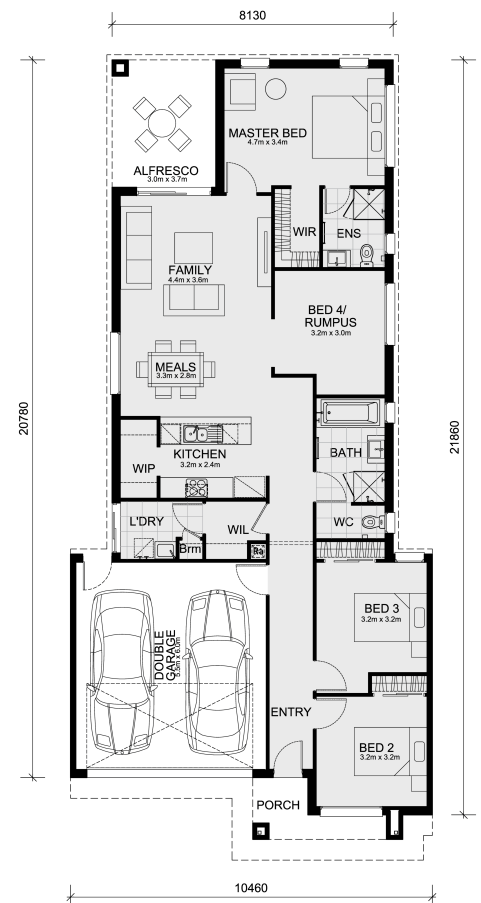
Land Size: 294 m² House Size: 192 m²

This Trentham 206 home and land package is located in Saffron Estate, Clyde North.

A turnkey home and land inclusions made affordable!

Check it out:

- Mimosa Homes' 50-Year Structural Warranty!
- Fixed site costs are included - only \$3,500! (limited-time offer)
- Laminated, carpeted, and tiled floor coverings throughout
- Front landscaping
- Home Security:
- **4 Cameras
- **LCD monitor with full phone app connection
- **Bosch alarm system, touch-screen keypad, 3 sensors
- **IP module for app connection
- **IP intercom, front door station, internal monitor with full app connection
- **2 sensor security lights
- Color-through concrete driveway and path to door
- Letterbox
- Clothesline
- Blinds for windows
- Recessed tile shower bases throughout
- Towel and toilet roll holders
- Continuous flow hot water units
- 2 remote controls for the garage & 1 wall-mounted control in the garage
- Internal access door from the garage to the inside
- Modern oven...



\$573,764

Adam Keleher

E: adamk@mimosahomes.com.au

P: 0439779909