

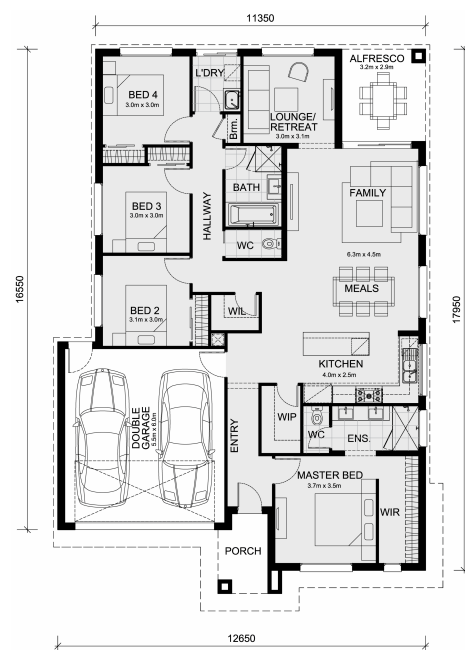


Land Size: 448 m² House Size: 208 m²

Own this Aspendale 226 home and 448-sqm of land facing south located in Kingbird Estate, Botanic Ridge.

Experience exceptional value at no extra cost! Here's what's included:

- 50-Year Structural Warranty from Mimosa Homes
- Fixed site costs included
- Quality laminated, carpeted, and tiled floor coverings throughout
- Generous 2,550mm high ceilings
- Stylish 20mm vitrified compact surface (stone) kitchen benchtops
- Modern 900mm oven, cooktop, and rangehood (600mm for homes under 20 squares)
- Cupboards beside the rangehood and above the fridge
- Microwave with trim kit
- Dishwasher
- Elegant 20mm vitrified compact surface (stone) benchtops in the ensuite and bathroom
- Spacious double vanity in the ensuite
- Large shower in the ensuite
- Semi-floating vanities throughout (ensuite, bathroom, and powder room)
- Recessed tile shower bases with a tiled insert grate for waste
- 2,000mm high shower screens in the bathroom and ensuite (instead of 1,850mm)
- Space-saving quick-slide robe d...



\$799,900

Adam Keleher

E: adamk@mimosahomes.com.au

P: 0439779909

DISCLAIMER: Land availability and pricing is subject to the development availability. Mimosa Homes reserves the right to amend specifications and price without notice. All plans and facades are indicative concepts only, and are not intended to be accurate depictions of the building, fencing, paths, driveways or landscaping and are not necessarily to scale. All dimensions are approximate (refer to working drawings). Packages prices are based on standard facades and standard inclusions