



4 2 2

## 4206 Cannington Avenue Werribee 3030 VIC

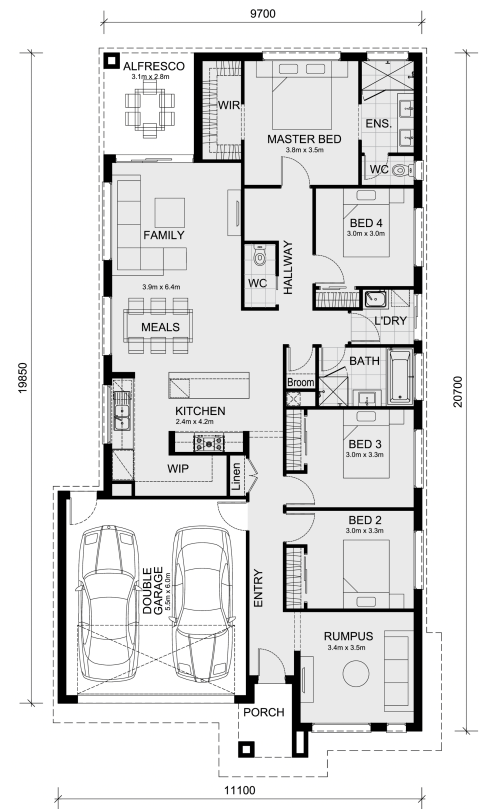
**Land Size: 400 m<sup>2</sup> House Size: 208 m<sup>2</sup>**

The Cosgrove 225 House and Land Package!

\* Mimosa Homes New Added Value Inclusions:

- 50 Year Structural Warranty!
- Inclusive of site costs & connections with H1 class slab as per standard inclusions!
- Quality floor coverings throughout entire home!
- Higher ceilings 2550mm to ground floor!
- Double Glazed Awning windows!
- LED Downlights to entire home!
- Fibre Optic Provision!
- Vitrified Compact Surface benchtop to kitchen, bathroom & ensuite!
- 900mm S/S upright oven and cook top with S/S canopy rangehood!
- Stainless steel Dishwasher!
- 7 star energy!
- Pre Priced upgrades and more!

CALL BUILDER DIRECT!...



# \$607,708

**Frank Mushtaq**

E: frank@mimosahomes.com.au