



4 2 2

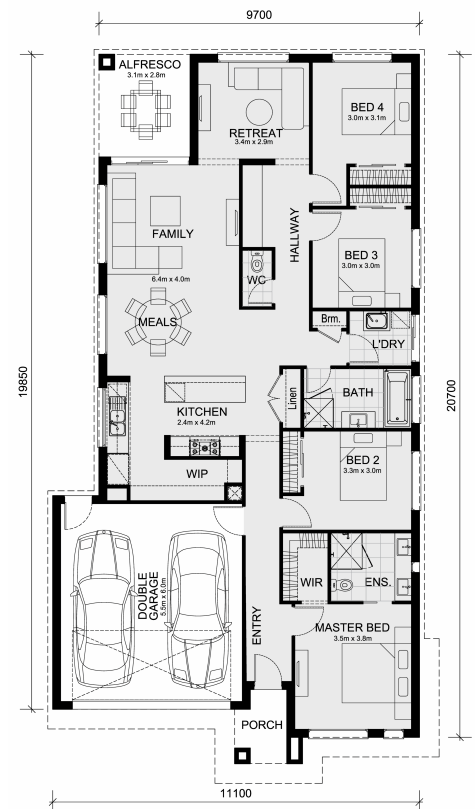
47 Francesca Street - Providence Estate OFFICER VIC 3809

Land Size: 375 m² House Size: 208 m²

Introducing the Riverdale 226 home and land package located in Providence Estate, Officer.

Experience exceptional value at no extra cost! Here's what's included:

- 50-Year Structural Warranty** from Mimosa Homes
- Fixed site costs included
- Quality laminated, carpeted, and tiled floor coverings throughout
- Generous 2,550mm high ceilings
- Stylish 20mm vitrified compact surface (stone) kitchen benchtops
- Modern 900mm oven, cooktop, and rangehood (600mm for homes under 20 squares)
- Cupboards beside the rangehood and above the fridge
- Microwave with trim kit
- Dishwasher
- Elegant 20mm vitrified compact surface (stone) benchtops in the ensuite and bathroom
- Spacious double vanity in the ensuite
- Large shower in the ensuite
- Semi-floating vanities throughout (ensuite, bathroom, and powder room)
- Recessed tile shower bases with a tiled insert grate for waste
- 2,000mm high shower screens in the bathroom and ensuite (instead of 1,850mm)
- Space-saving quick-slide robe doors in bed...



\$778,473

Adam Keleher

E: adamk@mimosahomes.com.au

P: 0439779909