



## 502 Eastleigh Estate Cranbourne East 3977 VIC

**Land Size: 474 m<sup>2</sup> House Size: 173.1 m<sup>2</sup>**

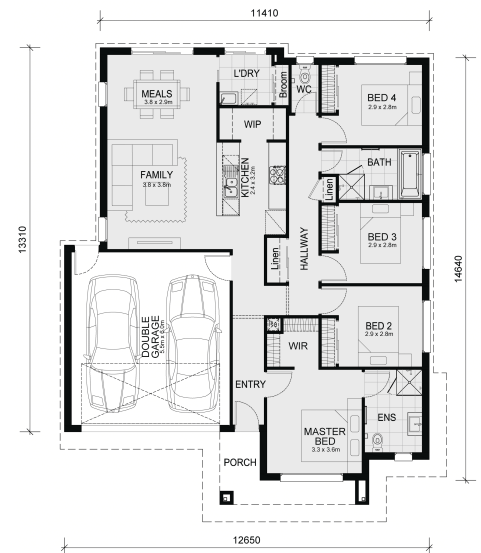
The Glenburn 175 ouse and Land Package includes:

\* Mimosa Homes New Added Value Inclusions:

- Fixed site costs & connections with H1 class slab as per standard inclusions
- 50 year Structural Warranty
- 2590mm ceiling height
- Revesre Cycle Split systems
- Downlights throughout
- Vitrious Stone Benchtops to Kitchen
- Quickslliding doors to robes
- Tiled Shower Bases & 100mm skirting tiles to wet areas.
- Quality floor coverings throughout entire home
- Double Glazed Awning windows
- 600mm S/S upright oven and
- Induction cook top with S/S canopy rangehood
- ContinuousElectric Hot Water system.
- 7 star energy Rating
- Driveway & Crossover (Allowance)
- Choice of colour pallets curated by MPorium interior designers

CALL BUILDER DIRECT!

All plans and facades are indicative only and may change. Mimosa Homes may amend plans, specifications, and prices without notice. Package prices are based on a standard facade, standard inclusions, and suitable land availability, excluding developer...



# \$745,692

**Lara Moro**

E: [lara@mimosahomes.com.au](mailto:lara@mimosahomes.com.au)

P: 0490 692 973