



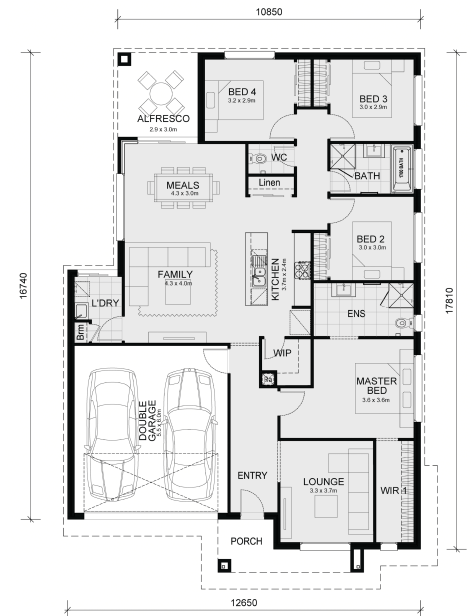
5117 Baddesley Circuit Strathtulloh 3338 VIC

Land Size: 392 m² House Size: 209.8 m²

* Mimosa Homes New Added Value Inclusions:

- 50 Year Structural Warranty!
- Inclusive of site costs & connections with H1 class slab as per standard inclusions!
- Quality floor coverings throughout entire home!
- Higher ceilings 2550mm to ground floor!
- Double Glazed Awning windows!
- 2000mm High Framed Shower Screen TO ENSUITE & BATHROOM
- LED Downlights to entire home!
- Fibre Optic Provision!
- 3.52kW photovoltaic solar system (battery ready)
- Vitrified Compact Surface benchtop to kitchen, bathroom & ensuite!
- 900mm S/S upright oven and cook top with S/S canopy rangehood!
- Stainless steel Dishwasher!
- 7-star energy!
- Pre Priced upgrades and more!

CALL FRANK 0432905897!...



\$690,134

Frank Mushtaq

E: frank@mimosahomes.com.au