



3 2 2

5126 Monstera Street - Meridian Estate CLYDE NORTH VIC 3978

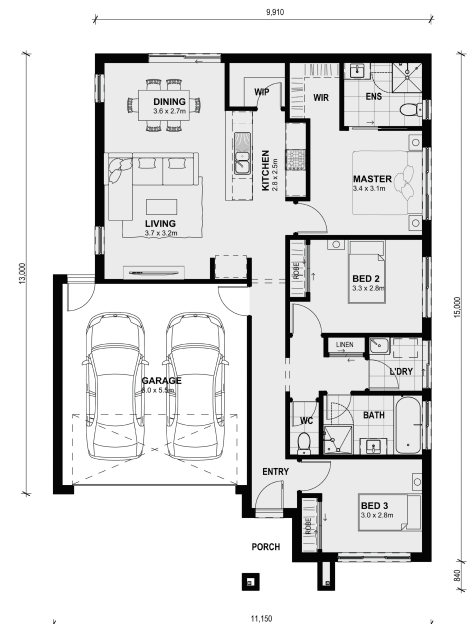
Land Size: 263 m² House Size: 150 m²

Perfect First Home, Investment or Downsizer on 12.5 lot in Meridian Estate, CLyde North.
First Home Buyers less 10K Grant \$579,950

The combined living, meals and kitchen areas make spending time with family and friends easy in the Boho 161. With two separate bedrooms that share a bathroom located at the front of the home and a large master bedroom with a walk-in wardrobe and ensuite at the rear of the home. The Boho 161 has the ability to fit on smaller blocks whilst not compromising on functionality.

All plans and facades are indicative only and may change. Mimosa Homes may amend plans, specifications, and prices without notice. Package prices are based on a standard facade, standard inclusions, and suitable land availability, excluding developer/estate requirements. Facade and inclusion images may show non-standard items not included in the price. Dimensions are approximate. Landscaping, fencing, decking, planter boxes, driveways, and paths are excluded unless specified.

Contact B...



\$589,950

Adam Keleher

E: adamk@mimosahomes.com.au

P: 0439779909