



 5
  3
  2

## 518 Gelbvieh Road Clyde North 3978 VIC

**Land Size: 392 m<sup>2</sup> House Size: 368.1 m<sup>2</sup>**

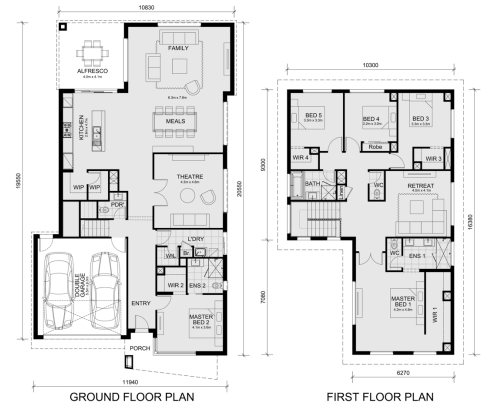
The Balmoral 396 House and Land Package!

\* Mimosa Homes New Added Value Inclusions:

- Inclusive of site costs & connections with H1 class slab as per standard inclusions!
- 50 year Structural Warranty!
- Colorbond Steel Roof to double storey homes only!
- Quality floor coverings throughout entire home!
- Higher ceilings 2550mm to ground floor!
- Double Glazed Awning windows!
- LED Downlights to entire home!
- Vitrified Compact Surface benchtop to kitchen, bathroom & ensuite!
- 900mm S/S upright oven and cook top with S/S canopy rangehood!
- Stainless steel Dishwasher and Microwave
- 4 star ducted gas heating unit!
- 7 star energy!
- Flexible floor plans & so much more!

CALL ADRIAN KELEHER 0448654032 DIRECT TO INSPECT THIS DISPLAY AND PACKAGE LOCATION !

All plans and facades are indicative only and may change. Mimosa Homes may amend plans, specifications, and prices without notice. Package prices are based on a standard facade, standard inclusions, and suitable land availability, ex...



# \$986,050

**Adrian Keleher**

E: [adriank@mimosahomes.com.au](mailto:adriank@mimosahomes.com.au)

P: 0448 654 032