

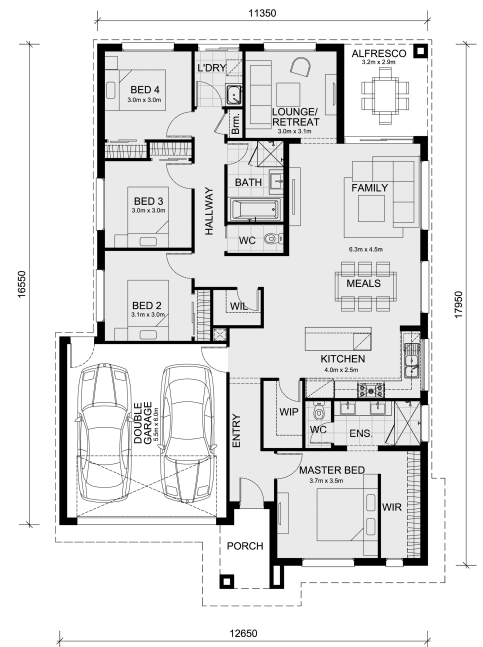


4 2 2

537 St. Boswells Street Mernda 3754 VIC

Land Size: 420 m² House Size: 208 m²

The Aspendale 226 House and Land Package!
* Mimosa Homes New Added Value Inclusions:
- 50 Year Structural Warranty!
- Inclusive of site costs & connections with H1 class slab as per standard inclusions!
- Quality floor coverings throughout entire home!
- Higher ceilings 2550mm to ground floor!
- Double Glazed Awning windows!
- LED Downlights to entire home!
- Fibre Optic Provision!
- Vitrified Compact Surface benchtop to kitchen, bathroom & ensuite!
- 900mm S/S upright oven and cook top with S/S canopy rangehood!
- Stainless steel Dishwasher and Microwave with trim kit!
- 7 star energy rated!
- Flexible floor plans & so much more!
CALL BUILDER DIRECT! NAP MADRIAGA 0427631471
All plans and facades are indicative only and may change. Mimosa Homes may amend plans, specifications, and prices without notice. Package prices are based on a standard facade, standard inclusions, and suitable land availability, excluding develo...



\$763,240

Nap Madriaga

E: nap@mimosahomes.com.au

P: 0427 631 471