



## 542 Kielder Crescent - Evergreen Estate CLYDE NORTH VIC 3978

**Land Size: 209 m<sup>2</sup> House Size: 122 m<sup>2</sup>**

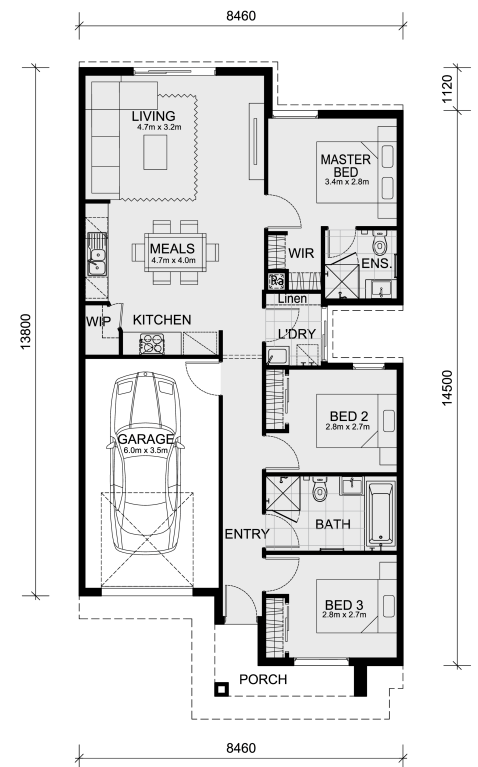
Step Into Your Future Home - Your Land Package is Ready!

This Locksley 131 home and land package is located in Evergreen Estate, Clyde North.

A turnkey home and land inclusions made affordable!

Check it out:

- Mimosa Homes' 50-Year Structural Warranty!
- Fixed site costs are included - only \$3,500! (limited-time offer)
- Laminated, carpeted, and tiled floor coverings throughout
- Front landscaping
- Home Security:
  - \*\*4 Cameras
  - \*\*LCD monitor with full phone app connection
  - \*\*Bosch alarm system, touch-screen keypad, 3 sensors
  - \*\*IP module for app connection
  - \*\*IP intercom, front door station, internal monitor with full app connection
- \*\*2 sensor security lights
- Color-through concrete driveway and path to door
- Letterbox
- Clothesline
- Blinds for windows
- Recessed tile shower bases throughout
- Towel and toilet roll holders
- Continuous flow hot water units
- 2 remote controls for the garage & 1 wall-mounted control in the garage
- Intern...



**\$530,204!**

**Adam Keleher**

E: adamk@mimosahomes.com.au

P: 0439779909