



3 2 1

551 Kielder Crescent - Evergreen Estate CLYDE NORTH VIC 3978

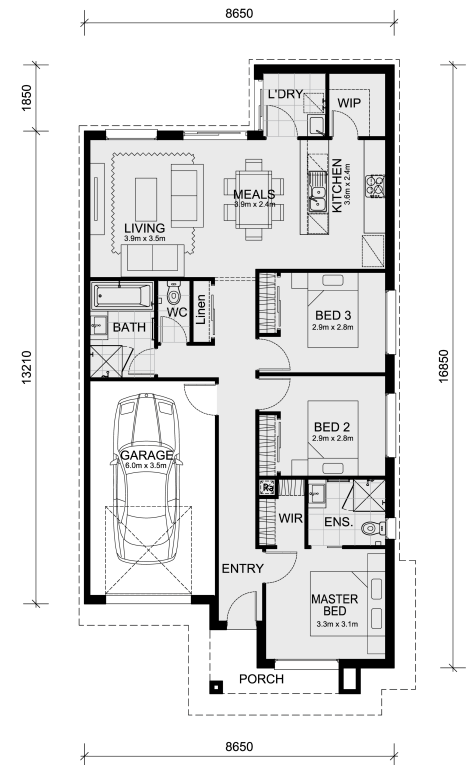
Land Size: 220 m² House Size: 133 m²

This home and land package is located in Evergreen Estate, Clyde North.

A turnkey home and land inclusions made affordable!

Check it out:

- Mimosa Homes' 50-Year Structural Warranty!
- Fixed site costs are included - only \$3,500! (limited-time offer)
- Laminated, carpeted, and tiled floor coverings throughout
- Front landscaping
- Home Security:
 - **4 Cameras
 - **LCD monitor with full phone app connection
 - **Bosch alarm system, touch-screen keypad, 3 sensors
 - **IP module for app connection
 - **IP intercom, front door station, internal monitor with full app connection
- **2 sensor security lights
- Color-through concrete driveway and path to door
- Letterbox
- Clothesline
- Blinds for windows
- Recessed tile shower bases throughout
- Towel and toilet roll holders
- Continuous flow hot water units
- 2 remote controls for the garage & 1 wall-mounted control in the garage
- Internal access door from the garage to the inside
- Modern oven, cooktop, ...



\$550,856

Adam Keleher

E: adamk@mimosahomes.com.au

P: 0439779909