



 4    
  2    
  2

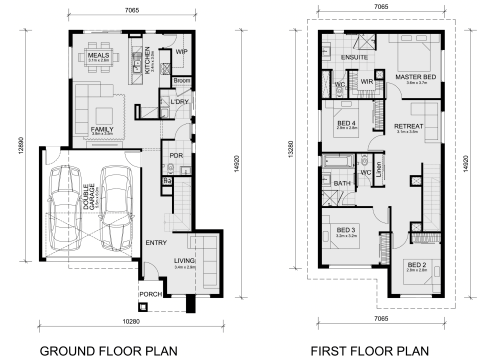
## 60940 Basalt Street Beveridge 3753 VIC

**Land Size: 337 m<sup>2</sup>    House Size: 215.5 m<sup>2</sup>**

\* Mimosa Homes New Added Value Inclusions:

- Inclusive of site costs & connections with H1 class slab as per standard inclusions!
- 50 Year Structural Warranty!
- Landscaping Included!
- Driveway Included!
- Blinds Throughout!
- Quality floor coverings throughout entire home!
- Double Glazed Awning windows!
- 600mm S/S upright oven and cook top with S/S canopy rangehood!
- Stainless steel Dishwasher
- 7-star energy!
- Pre Priced upgrades and more!

CALL FRANK 0432905897!...



# \$663,025

**Frank Mushtaq**

E: [frank@mimosahomes.com.au](mailto:frank@mimosahomes.com.au)

P: 0432 905 897