



4 2 2

## 628 Shade Street Pakenham 3810 VIC

**Land Size: 350 m<sup>2</sup> House Size: 206 m<sup>2</sup>**

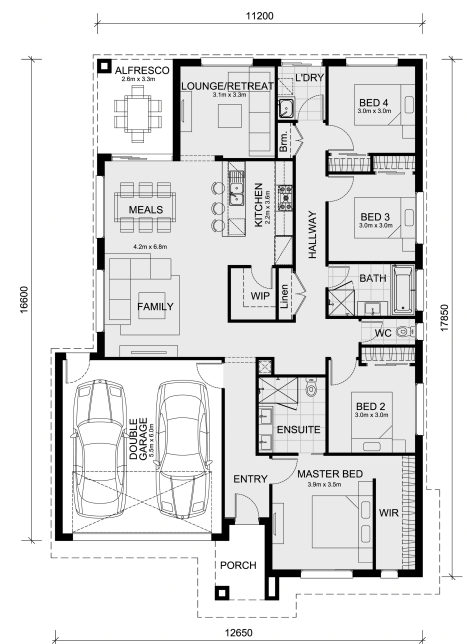
The Kallista 226 House and Land Package!

\* Mimosa Homes New Added Value Inclusions:

- 50 Year Structural Warranty!
- Inclusive of site costs & connections with H1 class slab as per standard inclusions!
- Quality floor coverings throughout entire home!
- Higher ceilings 2550mm to ground floor!
- Double Glazed Awning windows!
- LED Downlights to entire home!
- Fibre Optic Provision!
- Vitrified Compact Surface benchtop to kitchen, bathroom & ensuite!
- 900mm S/S built in electric oven and induction cook top with S/S canopy rangehood!
- Stainless steel Dishwasher and Microwave with trim kit!
- 7 star energy, with electric Heat Pump Hot Water Unit & Reverse Cycle heating and cooling for all year comfort !
- Flexible floor plans & so much more!

CALL BUILDER Consultant Adrian 0448654032 DIRECT!

All plans and facades are indicative only and may change. Mimosa Homes may amend plans, specifications, and prices without notice. Package prices are based on a standard facade, standard inclusio...



# \$705,100

**Adrian Keleher**

E: [adriank@mimosahomes.com.au](mailto:adriank@mimosahomes.com.au)

P: 0448 654 032