



4 2 2

## 631 Calamint Avenue - Verve Estate CLYDE NORTH VIC 3978

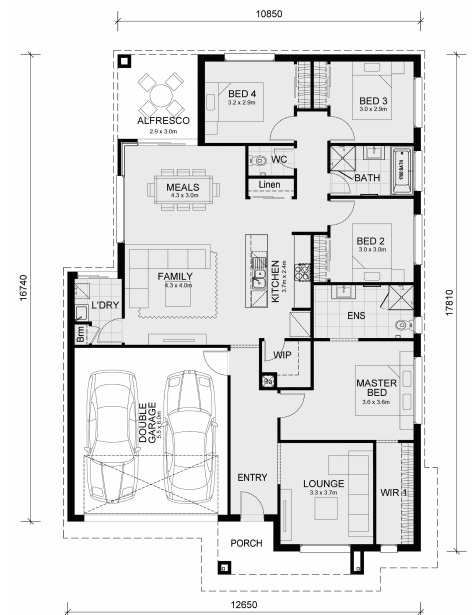
**Land Size: 392 m<sup>2</sup> House Size: 209 m<sup>2</sup>**

This Tahara 225 home and land package is located in Verve Estate, Clyde North.

Land inclusions made affordable!

Check it out:

- Mimosa Homes' 50-Year Structural Warranty!
- Fixed site costs are included - only \$3,500! (limited-time offer)
- Laminated, carpeted, and tiled floor coverings throughout
- Color-through concrete driveway and path to door
- Letterbox
- Clothesline
- Blinds for windows
- Recessed tile shower bases throughout
- Towel and toilet roll holders
- Continuous flow hot water units
- 2 remote controls for the garage & 1 wall-mounted control in the garage
- Internal access door from the garage to the inside
- Modern oven, cooktop, and rangehood
- Fiber optic provision with 2 phone/data points
- 7-Star energy rating for the home with heating
- Concrete floor in an alfresco area, where applicable
- Part A Termite Management System for all pipe penetrations through the slab
- Part B Termite Management System for the external per...



# \$737,933

**Adam Keleher**

E: adamk@mimosahomes.com.au

P: 0439779909