



 3
  2
  2

742 Calamint Avenue, VERVE Estate Clyde 3978 VIC

Land Size: 312 m² House Size: 254.2 m²

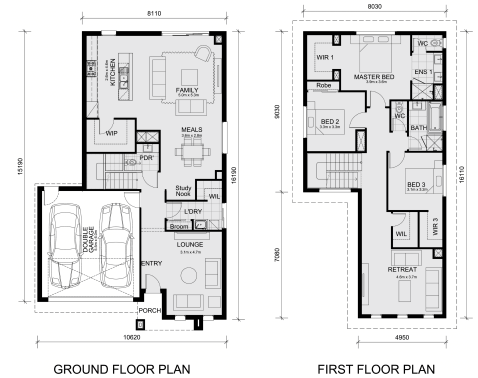
The Langmore 274 House and Land Package!

* Mimosa Homes New Added Value Inclusions:

- Inclusive of site costs & connections with H1 class slab as per standard inclusions!
- 50 year Structural Warranty!
- Colorbond Steel Roof to double storey homes only!
- Quality floor coverings throughout entire home!
- Higher ceilings 2550mm to ground floor!
- Double Glazed Awning windows!
- LED Downlights to entire home!
- Vitrified Compact Surface benchtop to kitchen, bathroom & ensuite!
- 900mm S/S upright oven and cook top with S/S canopy rangehood!
- Stainless steel Dishwasher and Microwave
- 4 star ducted gas heating unit!
- 7 star energy!
- Flexible floor plans & so much more!

CALL BUILDER DIRECT!

All plans and facades are indicative only and may change. Mimosa Homes may amend plans, specifications, and prices without notice. Package prices are based on a standard facade, standard inclusions, and suitable land availability, excluding developer/estate requirements. Facade and inclusion images...



\$810,430

Adrian Keleher

E: adriank@mimosahomes.com.au

P: 0448 654 032