



3 2 2

## 835 Maple Grove Pakenham 3810 VIC

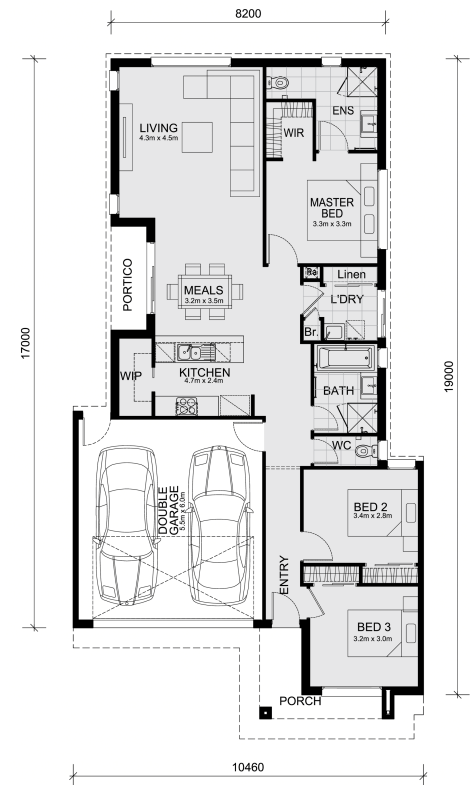
**Land Size: 263 m<sup>2</sup> House Size: 165 m<sup>2</sup>**

This FIXED PRICE House and Land Package includes:

- FIXED SITE COSTS & connections with H1 class slab as per standard inclusions
- 50 year Structural Warranty
- 2590mm ceiling height
- Reverse Cycle Airconditioning/ Heating
- Downlights throughout
- Vitrious Stone Benchtops to Kitchen
- Quicksiding doors to robes
- Tiled Shower Bases & 100mm skirting tiles to wet areas.
- Quality floor coverings throughout entire home
- Double Glazed Awning windows
- 600mm S/S upright oven and cook top with S/S canopy rangehood
- Electric hot water system.
- 7 star energy Rating
- Driveway
- Choice of colour pallets curated by MPorium interior designers

CALL BUILDER DIRECT!

All plans and facades are indicative only and may change. Mimosa Homes may amend plans, specifications, and prices without notice. Package prices are based on a standard facade, standard inclusions, and suitable land availability, excluding developer/estate requirements. Facade and inclusion images may show non standard items n...



# \$614,365

**Lara Moro**

E: [lara@mimosahomes.com.au](mailto:lara@mimosahomes.com.au)