



4 2 2

9 Yardi Way CLYDE NORTH VIC 3978

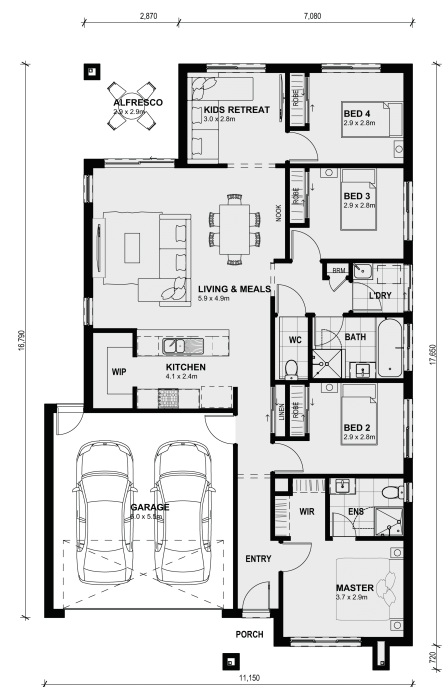
Land Size: 312.5 m² House Size: 183 m²

With three bedrooms, a large master bedroom with walk-in wardrobe and ensuite and an extra living space, this modern home is perfect for retirees, couples, small families or investors.

Includes Front landscaping and driveway.

All plans and facades are indicative only and may change. Mimosa Homes may amend plans, specifications, and prices without notice. Package prices are based on a standard facade, standard inclusions, and suitable land availability, excluding developer/estate requirements. Facade and inclusion images may show non-standard items not included in the price. Dimensions are approximate. Landscaping, fencing, decking, planter boxes, driveways, and paths are excluded unless specified.

Pricing includes Land rebate subject to change....



\$641,500

Adam Keleher

E: adamk@mimosahomes.com.au

P: 0439779909