



4 2 2

908 Bonifacio Road - Evergreen Estate CLYDE VIC 3978

Land Size: 392 m² House Size: 235 m²

The Mornington 250 House and Land Package in Evergreen Estate by Stockland.

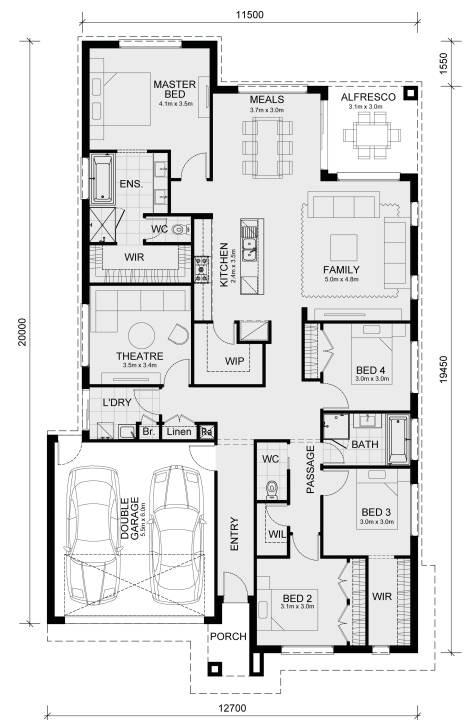
* Mimosa Homes Added Value Inclusions:

- Fixed site cost
- Quality floor coverings throughout entire home!
- Higher ceilings 2550mm to ground floor!
- Double Glazed Awning windows
- Downlights to living areas!
- Vitrified Compact Surface benchtop to kitchen!
- 900mm S/S upright oven and cook top with S/S canopy rangehood!
- Stainless steel Dishwasher and Microwave with trim kit!
- Overhead cupboards & wine rack! (Design specific)
- Remote control panel sectional lift garage door!
- 7 star energy with solar hot water!
- Flexible floor plans & so much more!

CALL BUILDER DIRECT! 0439 779 909

Price after Land Rebate subject to availability.

All plans and facades are indicative only and may change. Mimosa Homes may amend plans, specifications, and prices without notice. Package prices are based on a standard facade, standard inclusions, and suitable land availability, excluding developer/estate requir...



\$738,500

Adam Keleher

E: adamk@mimosahomes.com.au

P: 0439779909