



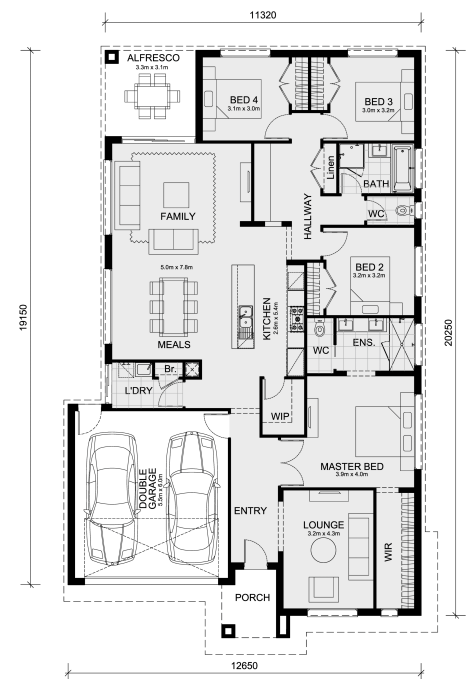
4 2 2

## 909 Bonifacio Road - Evergreen Estate CLYDE VIC 3978

**Land Size: 392 m<sup>2</sup> House Size: 235 m<sup>2</sup>**

The Saba 250 House and Land Package in Evergreen Estate!

- Land Titles very soon, start building straight away!
  - Inclusive of site costs & connections
  - Quality floor coverings throughout entire home!
  - Higher ceilings 2550mm to ground floor!
  - Double Glazed Awning windows
  - Downlights to living areas!
  - Vitrified Compact Surface benchtop to kitchen!
  - 900mm S/S upright oven and cook top with S/S canopy rangehood!
  - Stainless steel Dishwasher and Microwave with trim kit!
  - Overhead cupboards & wine rack! (Design specific)
  - Remote control panel sectional lift garage door!
  - 7 star energy with solar hot water!
  - Flexible floor plans & so much more!
  - Price after Land Rebate, which is subject to change.
- CALL BUILDER DIRECT! Adam 0439 779 909



**SAVE \$\$\$ ON STAMP DUTY!!!**

All plans and facades are indicative only and may change. Mimosa Homes may amend plans, specifications, and prices without notice. Package prices are based on a standard facade, standard inclusions, and suitable land availability, exc...

# \$729,995

**Adam Keleher**

E: [adamk@mimosahomes.com.au](mailto:adamk@mimosahomes.com.au)

P: 0439779909