



Balmoral 339

4 bedrooms 3 bathrooms 2 cars

L340 Harwich St Mayflower Estate THORNHILL PARK VIC

3335
Land Size: 462 m² House Size: 314 m²

The Balmoral 339 House and Land Package!

Featuring a generous open plan family & meals, large open kitchen with a butlers pantry, theatre room and a separate guest suite with its own bathroom and robe on the ground floor, while still allowing on the first floor 4 bedrooms with master offering ensuite and WIR, retreat. The Balmoral offers 5 bedrooms, 2 ensuites and central bathroom. With its clever layout and accommodating design, the Balmoral perfectly caters for a large family all while offering a touch of luxury for everyday living.

Inclusions:

NBN Provision

40mm Caesar Stone to Kitchen

20mm Caesar Stone To Ensuite, Powder Room, Bathroom, Butler's Pantry (design Specific)

Undermount Sink to Kitchen

LED Downlights to entire home

900mm Induction Cooktop with 900mm Oven

Electric Boosted Solar Hot Water System

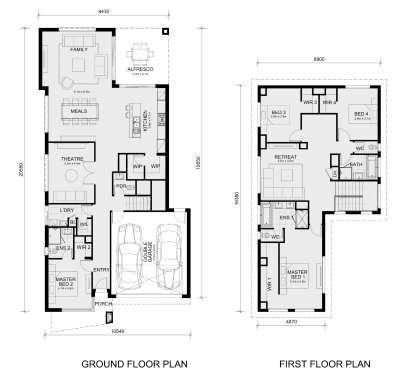
Reverse Cycle Ducted Air Conditioning

Home Alarm System

800mm wide Laminated Double Door Laundry Cabinet with Insert trough

CALL Max on 0422 926 349

All plans and facades ar...



\$848,380

Max Gutierrez

E: max@mimosahomes.com.au

P: 0422926349